

THE

Camellia Review



Camellia japonica 'Elisabeth Pink'
Courtesy Henry E. Huntington Library and Art Gallery

Official Bulletin of the Southern California Camellia Society

Vol. 16

April 1955

No. 7

Southern California Camellia Society Inc.

PRESIDENT

EDWARDS METCALF
745 Canterbury Rd., San Marino 9
SYcamore 6-7450

1ST VICE PRESIDENT

MRS. VERN O. McCASKILL
25 So. Michillinda Ave., E. Pasadena 10
SYcamore 3-4677

2ND VICE PRESIDENT

RALPH S. PEER
8159 Hollywood Blvd., Los Angeles 46
Hollywood 7-8831

SECRETARY-TREASURER

COL. C. M. GALE
40 N. San Rafael Ave., Pasadena 2
SYcamore 6-3740

DIRECTORS

CLIFFORD J. ARGUE
4714 El Camino Corto, La Canada
SYlvan 0-1448

JOSEPH N. KAPP
920 Athens St., Altadena
SYlvan 7-4237

HAROLD E. DRYDEN
820 Winston Ave., San Marino 9
SYcamore 3-4214

CARYLL W. PITKIN
2465 Sherwood Rd., San Marino 9

JOHN F. LAMB
400 W. Foothill, Arcadia

HARVEY F. SHORT
781 N. Foothill Blvd., Pasadena

COMMITTEE CHAIRMEN

SOCIETY MEETINGS

Program
EDWARDS H. METCALF
SYcamore 6-7450
Vice Chairman, HARVEY F. SHORT
SYcamore 7-8698

Table Arrangements
ELEANOR HAYWARD

Refreshments
CARYLL W. PITKIN
ATlantic 1-5852

Awards
AUGUST F. KAPP
SYcamore 0-2636

Plant Procurement
JOSEPH KAPP
SYcamore 7-4237

MEMBERSHIP AND RECEPTION

DR. HERBERT SHIRLEY
CHArleston 6-1522

JOHN F. LAMB
DOuglas 6-3218

BUDGET AND FINANCE

AUGUST F. KAPP
SYlvan 0-2636

SO. CALIFORNIA CAMELLIA GARDEN

E. C. TOURJE
ATlantic 4-0907

NOMENCLATURE

WM. WOODROOF

CAMELLIA REVIEW

DR. JOHN H. CLAIRMONT
1818 Oak Knoll Rd., Glendale 8
Cltrus 3-4611

INTER SOCIETY RELATIONS

LAWRENCE R. BRYANT
CUmberland 3-5405

REGISTRATION COMMITTEE

J. HOWARD ASPER
1405 Flanders Road, La Canada
SYlvan 0-1998

GROWERS RELATIONS

HARVEY F. SHORT
SYcamore 7-8698

LIBRARIAN

MRS. C. M. GALE
SYcamore 6-3740

HERTRICH AWARDS

AUGUST F. KAPP

OFFICIAL BULLETIN

ELIZABETH BEEBE, 706 S. Fair Oaks, Pasadena.....SYcamore 9-8097

HONORARY LIFE MEMBERS

DR. H. HAROLD HUME, Provost, Division of Agriculture, University of Florida

MR. WILLIAM HERTRICH, Curator Emeritus, Huntington Botanic Gardens,
San Marino, Calif.

MR. WALTER G. HAZLEWOOD, Epping, New South Wales, Australia

MRS. ANNE GALLI, 505 Bradford St., Pasadena 2, Calif.

PUBLISHED BY THE SOUTHERN CALIFORNIA CAMELLIA SOCIETY, INC.

Copyright, 1955

CHANGE OF ADDRESS: Notify the Secretary at once. Magazines are not forwarded by the Post Office.

Republication permitted, if due credit is given this magazine and author.

All manuscript for publication should be sent direct to the Editor.

Published monthly from October through April, and in July.

The Society holds open meetings on the Second Tuesday of every month, November to April, inclusive at the San Marino Women's Club House, 1800 Huntington Drive. A cut-camellia blossom exhibit at 7:30 o'clock regularly precedes the program which starts at 8:00.

Application for membership may be made by letter. Annual dues: \$5.00.

DIRECTORY OF AFFILIATED SOCIETIES

- Central California Camellia Society Fresno, Calif.
 Meeting Place: Elementary School Auditorium, Fresno State College
 Secretary: Mrs. Maynard Munger, 5140 N. Fruit, Fresno
 Date of Meeting: 2nd Tuesday of the month
- Camellia Society of Kern County Bakersfield, Calif.
 Meeting Place: Fiesta Room, El Adobe Motel, Union Ave.
 Secretary: Mrs. Yale Langworthy, 2029 Esther Drive, Bakersfield
 Date of Meeting: 2nd Monday of the month, Oct. thru May
- San Diego Camellia Society San Diego, Calif
 Meeting Place: Floral Association Building, Balboa Park
 Secretary: Mrs. L. B. Goodall, 3036 Suncrest Dr., San Diego 16
 Date of Meeting: 2nd Friday of each month at 7:30 p.m.
- Pomona Valley Camellia Society Pomona, Calif
 Meeting Place: Claremont Women's Club, 345 W. 12th, Claremont
 Secretary: C. D. Cothran, 1105 San Dimas Ave., San Dimas
 Date of Meeting: 2nd Thursday of each month
- Temple City Camellia Society Temple City, Calif.
 Meeting Place: Women's Club Auditorium, Woodruff at Kauffman, Temple City
 Secretary: Gertrude S. Rose, 6025 North Muscatel, San Gabriel
 Date of Meeting: 2nd Monday of each month, Nov. thru March
- Camellia Society of Orange County Santa Ana, Calif.
 Meeting Place: YWCA Building, 1411 North Broadway, Santa Ana
 Secretary: Mrs. Geo. T. Butler, 1121 Orange Ave., Santa Ana
 4th Wednesday, Nov. to April
- Huntington Camellia Garden San Marino, Calif.
 Huntington Library and Art Gallery, Oxford Rd., San Marino
-
-

CONTENTS

VOL. 16	APRIL, 1955	NO. 7
Camellia Reviewer, <i>Elizabeth Beebe</i>		2
Edwards Metcalf Named New SCCS President		3
Why Plant Ligustrum? <i>William Wylam</i>		4
The Linton Seedlings, <i>Walter G. Hazlewood</i>		9
Report of the Central California Camellia Society		11
To The Ladies, <i>Charlotte Hoak</i>		12
Impressions of New Favorites, <i>Harvey F. Short</i>		13
Hardy Camellias in Belgium, <i>Roger De Bisschop</i>		15
Controlling Soil Salinity in Camellia Culture, <i>Harold E. Pearson</i>		17
Members of the S C C S		29

Camellia Reviewer

ELIZABETH BEEBE

The Unforgettable

The Show is over, but the memory lingers on, to paraphrase the old saying. And what a memory—the tables and tables of camellia radiance with a background setting on the stage of massed branches of the vivid rose flowering peach in greenery- of good fellowship- of never ending curiosity of exhibitors and plain visitors- of delighted meetings of old friends and delightful meetings with new friends. A Camellia Show in short that will be long remembered for its splendid execution, its lovely, lovely specimens and its blessing by Mother Nature who turned on all her California sunshine charm.

Aha or Hey-hey!

Charting a middle-of-the road course of pronunciation between Cameel-ya and Camell-ya, we are now faced with the necessity of decision between reticulay-ta or reticulah-ta. This confusion was caused by the southern camellia experts who were in Pasadena for our Show. It comes down to the fact that even though they can't grow reticulay-tas they insist that they pronounce them correctly. Between the two of course we feel that growing them is the most important but we are never one to argue against the correct pronunciation of the English language. Still, as a westerner who enjoys the blunt talk of the west (even though loving by proxy the Southern drawl) we may continue to enjoy our reticulah-tas and let the quips fall where they may. Besides, it makes us feel a bit pleasantly la-de-da to do it.

South Comes West

Declaring that they were just "hungry for Camellias," several Camelliaphiles traveled from the deep

So'th and, we believe, were almost sated with Southern California Camellias before they finished their rounds. These well-known individuals including John P. Ilges of Atlanta, Georgia; Aubrey Harris of Shreveport, Louisiana; Judge Arthur Solomon of Savannah, Georgia, and D. C. Strother and Mr. R. Murray both of Fort Valley, Georgia, were among the judges for the S C C S Show and it was very pleasant to match their personalities against those known to us only through correspondence. They were responsible for bringing reticulay-tas in to confuse us, but there was nothing confusing about their admiration of the wonderful display of these blooms they saw at the S C C S Show. "We haven't been able to grow them," admitted Judge Solomon. However, adaptable as Camellias are and ingenuous as these expert Camellia growers are, we have no doubt that eventually reticulay-tas will flourish down South.

A gratifying incident of their visit was when, as one of an impromptu panel at the Pacific Society's meeting in Glendale, Mr. Ilges, in answer to the question "What do you consider the best flowers you have seen from the west," declared with no hesitation, "Angel and Reg Ragland." An extra bright Camellia to our Society as these were developed by our own members, namely Elizabeth Councilman and William Woodroof.

Sasanquas To Take Over

The short article by Bill Wylam in this issue is just to whet your appetite for the spread of sasanqua information which is going to take over the July CAMELLIA REVIEW. Having been brought up with japonicas and bowled over by the reticulatas (long "a") at our show you will be further utterly confused by the preponderance of reasons why sasanquas should come first in your esteem. If you'll just tell us now how to choose be-

(Continued on Page 26)

EDWARDS METCALF IS NAMED NEW PRESIDENT OF SCCS

"We are going to try to equal the efforts of the Society in the past and with the fine, strong Board of Directors hope to have a good year, building up to our part as Co-Host with the American Camellia Society for the Camellia Convention to be held in Pasadena in 1956."

This was part of the first statement made by the new President of the Southern California Camellia Society, Edwards Metcalf.

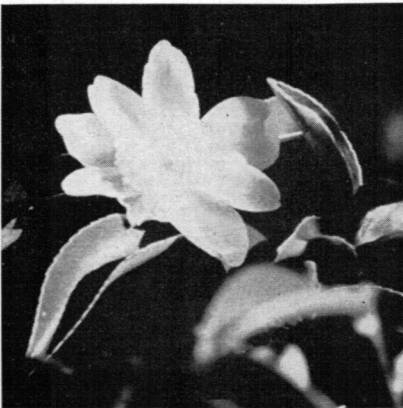
Mr. Metcalf, finishing a brilliant year as Program Chairman, was the logical candidate for President. He has been vitally interested in Camellias for many years, at present perhaps more concerned with Miniatures and reticulatas than other species, his wonderful reticulata blooms winning honors at the local Camellia Shows.

Both Mr. and Mrs. Metcalf are thoroughly Californian, and their families before them. They have been residents of San Marino for nearly twenty years. Mr. Metcalf left his home only for service duty, being a Lieutenant Commander in the Navy during World War II and serving a period of time in Korea in 1951.



Edwards Metcalf displays his really super reticulata 'Tali Queen' which was judged the best amateur reticulata of the S.C.C.S. Show.

The new President states that he hopes more society members will take an active part in society activities and that he wants to hear all suggestions members may have as to programs or projects. He is working on committee personnel, saying that he expects to name many "small" committees soon.



A yellow camellia from the parent bush, *C. japonica* 'Jaune.' This was propagated by Moreira da Silva of Porto, Portugal.



Harold Pearson (Show Publicity) and Floyd Bunnelle, President of the Pomona Society, struggle into their Show headquarters.

WHY PLANT LIGUSTRUM?

By WILLIAM E. WYLAM

Why DO you plant Ligustrum, Euonymus, Buxus, Coprosma or any number of similar shrubs which have nothing to recommend them but their foliage? Why plant these when you can plant something with equally satisfactory foliage PLUS beautiful flowers for fall bloom, when we have so little to brighten the garden? I would like all of you to seriously ask yourselves this question because I have the answer. It is simply "Plant Sasanquas."

Right away I know you will say "But I want something that will grow well in sun." The answer is still "Plant Sasanquas."

Now, mind you—I am not advocating that you grab the first Sasanqua at hand and slap it against a south wall to catch all the reflected heat from an adjacent driveway. Some of the whites and beautiful soft pinks, such as Minina, have flowers that are best in light shade. However, there are Sasanquas such as Cleopatra, and the new Colleen, that will take such situations in full stride.

Milo Rowell, of Fresno, recently wrote an interesting article for the Camellia Society of Sacramento. In it he mentioned a successful planting of Hugh Evans against a south porch where other shrubs had failed because of the heat.

My own experience with Hugh Evans, and Cleopatra, is that they produce more large flowers, of better texture and color, in sun than when grown in shade.

Among some of the sasanquas which I have seen happily growing in full sun, in the Pasadena area, are Tanya, Briar Rose, Rosea, Showa-No-Sakae, Shishigashira, Negishi-Ko and Brilliancy.

So far I have only seen the fine Sasanqua, which I imported from Australia as "Hiryu," and the beautiful McCaskill seedling, "Bill Wylam," growing under lath but I feel certain both of them will prove at home in sunny situations. Other dark Sasanquas that will probably do well in sun are—Velvety, Crimson Queen

and Hinode-No-Umi.

Mr. Rowell lists Gulf Glory, Hinode-Kumo, Ko-Gyoku, Mine-No-Yuki and Setsugekka as having been grown successfully in three-fourth sun and Brilliancy, Jean May, Papaver, Shichifukujin, Shichi-Hoden, Showa-No-Sakae, Splendor, Hana-Jiman and Ocean Springs as doing well in three-fourth to full sun. This, it must be remembered, is in Fresno where conditions are more severe than in Pasadena.

One other Camellia which Mr. Rowell mentioned is the Vernalis "Dawn." This wonderful shrub seems to do equally well in sun or shade and the masses of bloom make fine cut flowers. While this is not a Sasanqua, it has the appearance and many of the best characteristics of Sasanquas. A hedge of this will not only reward you with clouds of bloom, in mid-winter, but the glossy, dark green foliage will beautify your home all year.

Again I ask—"Why bother to plant such a mediocre shrub as Ligustrum when it is so easy to enjoy beautiful flowering Sasanquas?"

SEED REPORT

Mr. Arnold Burr of "Troubles Enough," in Rockville, Maryland, writes that his seedlings from our seeds which he planted in 1953 have come through temperatures of 5°, 6°, 12° and 16° very well. They were planted and grown outdoors, even withstanding heavy winds with the cold.

Ed. Note: This should be encouraging to our seed purchasers.

The S C C S 1955 Camellia Show

Set a stage with graceful branches of deep flowering peach nestled in feathery green, overlooking tables and tables of Show camellias with the incredible "bests" highlighted on their silver trays; add throngs of Camellia lovers and you will have a slight idea of the extremely successful Camellia Show of 1955 staged by the S C C S.

The judges including Camellia experts from the South took long deliberation before being able to agree on winners. Space not permitting the publication of names of all those who won ribbons, the highest honors were awarded as follows:

Best Flower Japonica, amateur: 'R. L. Wheeler' entered by Dr. R. W. Tellam.

Best Flower, Reticulata, amateur: 'Tali Queen,' entered by Edwards Metcalf.

Best Flower Japonica, Professional: 'Glen 40', entered by Coolidge Gardens.

Best Flower Reticulata, Professional: 'Moutancha,' entered by Descanso Gardens.

Sweepstakes Trophy: R. W. Ragland.

Arrangements Sweepstakes: Clara Melovidoff.

This was the first year that the S C C S gave American Camellia Society Awards. These were as follows:

Gold Certificate for Sweepstakes winner in Divisions I, II, III and IV went to R. W. Ragland.

Silver Certificate for Sweepstakes Runner-up went to Dr. E. C. Hubbs.

Highly Commended Certificate for seedling when Judges consider it clearly distinct from and notably superior to any variety in commerce was awarded to Harvey F. Short for his 'Guest of Honor' developed at Coolidge Nurseries.



Mrs. Reg Ragland proudly holds two of the gorgeous, bold 'Reg Ragland' blossoms named for her husband by its developer, William Woodroof.

"AFTER THE SHOW" MARCH MEETING OF S C C S PROVES VERY INFORMATIVE

Unflagging interest in the Camellia was well demonstrated this month when, only two days after the society's show, a sizable crowd turned out for the March meeting. One wondered, too, how it was possible for plants to continue yielding such specimen flowers after the plants had been so thoroughly robbed for the Show.

Pleasant to behold were the long tables laden with the beauty one expects from this wonder plan and Camellia lovers bent over them as enthusiastically as if it was the first time they had ever seen such flowery tables.

In his brief remarks, as President Dryden called the meeting to order, he announced as new directors, Clifford Argue, Joseph Kapp and Mrs. Vern McCaskill.

Edwards Metcalf introduced the first speaker on the program, Howard Asper, who scarcely needed an introduction.

Mr. Asper stood in front of two tables frothing with the radiant color of reticulata blooms. The display was outstanding in that *all but three* of the entire 18 varieties of reticulatas now propagated in this country were represented on those tables. Mr. Asper began by saying that the 18th of March this year would mark the 7th anniversary of the arrival in America of the reticulatas. He repeated the story of their arrival, known to many; the arguments with the customs officials in San Francisco to keep the plants from being thrown into the Bay with their foreign soil about their roots. After this soil had been washed off and the plants themselves had to undergo fumigation chemicals, the prospect had not been very encouraging. Looking at the flowers now, Mr. Asper recalled that during the first bloomings he had been one of three men asked to designate which reticulatas he would consider favorable for growing. A flower set aside was Moutancha which is now known as a prize winner. Mr. Asper remarked that it was indeed presumptuous even to think of forming such a snap judgment on plants whose origin is really lost in antiquity although

known from 900 A.D. Even now his opinion keeps changing as he sees these remarkable camellias develop.

One of the reasons for Mr. Asper's talk was for him to help his audience distinguish between the reticulatas so in describing them he also compared them. One reason for confusion, he stated, was that as some of the flowers opened, the color changed. For instance, it takes 'Purple Gown' almost two weeks before it is fully opened and when that time comes, it has lost some of its color. Also it becomes an almost complete pom pom when in full flower.

In aiding growers to distinguish between varieties of reticulatas, Mr. Asper gave some specific characteristics as follows: Large Osmanthus Leaf and Moutancha are inclined to be more dwarf in their growing habits: Butterfly Wings Reticulate is a very early bloomer: Crimson Robe grafts easily: Shot Silk, Willow Wand and Small Osmanthus Leaf are easy to grow: Crimson Robe and Willow Wand grow rapidly: the starting flowers of Shot Silk Reticulate resemble those of Moutancha: Great resemblance between Queen of Tali and Noble Pearl; Similarity between Cornelian, Lion's Head and Chang's Temple: Confucius is always marked by stamens in 5 distinct groups: Variety of hues includes the deep, unusual shade of pink characterizing Moutancha, the iridescence of the pink of Shot Silk, the orchid tone of pink of Willow Wand and the shrimp

pink of Chrysanthemum Petal.

To illustrate these differences, Mr. Asper showed blooms of Moutancha, Butterfly Wings Reticulate, Crimson Robe, Shot Silk, Purple Gown, Large Osmanthus Leaf, Small Osmanthus Leaf, Pagoda, Willow Wand, Queen of Tali, Noble Pearl, Cornelian, Lion's Head, Chang's Temple, Butterfly Wings, Wild Reticulata (Forest Strain), Buddha and Confucius.

The second speaker of the evening was Dr. C. A. Hanson who is well known for his research work in crop disease and especially for his part in the development of a fungicide to further the eradication of flower blight. Dr. Hanson began by stating that before petal blight was brought into the states sometime in the late '30's, Camellias had always been relatively pest free and the disease became very widespread before it was recognized and understood. It has become a serious problem now in many of the camellia growing areas of the United States and is reported from Oregon, Georgia, Louisiana, Texas and in California.

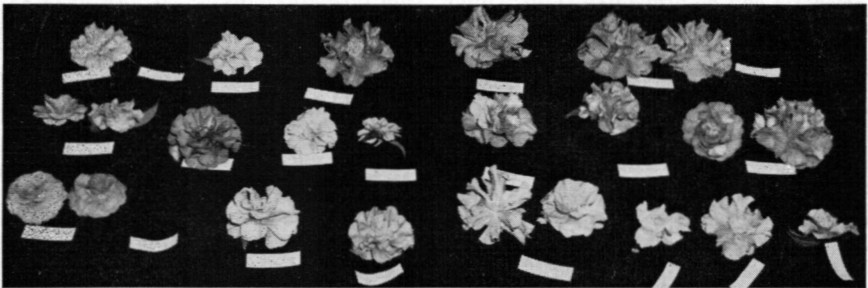
As it happened, one of the chemists involved in research was a Camellia grower so camellias were chosen for experimentation and study.

It was discovered that the disease is caused by a fungus *Sclerotinia camelliae* and is specific on camellia flowers. The diseased flowers become

spotted, blotched, generally discolored and shatter or fall off prematurely. Blossom life is materially shortened and cut blooms may become spotted and discolored within a few hours after cutting if kept in a warm environment.

Because of its specificity the fungus is dependent on camellia flowers for its survival. Therefore environmental conditions favorable for camellia flowering are also very favorable to the sporulation of the fungus. All varieties of *C. japonica* are susceptible and some late flowering varieties of *C. sasanqua* have been found diseased.

The disease appears first as one or more small, tan or brownish spots, usually on a petal. The spot enlarges rather rapidly until the entire petal becomes discolored. The blighted area may have "veins" or filaments of a darker tone running through it. Usually the entire base of the flower becomes infected and often the whole flower. The blossom does not rot or wilt but remains somewhat firm in appearance. A completely blighted bloom may retain its shape perfectly yet be overall light brown in color. The petals often shatter easily and when the blight reaches the receptacle or base of the flower the slightest shock may drop the bloom. The base of such blooms is brownish and discolored, as contrasted with a nor-



These exquisite examples of the reticulata species of Camellias were the graphic illustrations for the talk given by J. Howard Asper for the March meeting of the S.C.C.S. All but three of the eighteen varieties of reticulatas now propagated in this country are represented here.

mal blight free blossom. Flowers injured by weather usually have the injury confined to the outer edges of the petals and the injured area is a strawyellow or much lighter in color than a blighted flower.

The fallen petals or flowers gradually shrivel and dry. During this period the fungus forms a hard, black, seedlike body in the thicker, fleshier portions of the petal or flower. This is the carryover or resting stage, *sclerotium*, of the fungus and serves to carry the disease over to a succeeding camellia blooming season. The *sclerotia* are very resistant to environmental conditions and vary considerably in size and shape. The presence of sclerotia in a dried flower can be determined by squeezing the base of the bloom. The hard sclerotia are easily located in this manner.

During some succeeding blooming season, when the weather is favorable, after a rain perhaps, with a temperature of 60-70° F., the *sclerotium* puts up one or more inverted mushroom like, *apothecia*. These are the sporulating structures of the fungus and as many as 33 have been observed coming from one large sclerotium. When the apothecium is mature it puffs out a cloud of spores, any one of which can start the disease cycle again.

The disease can be controlled by interrupting this cycle at one or more points. By picking off and destroying all infected flowers the formation of sclerotia can be prevented. This would have to be continued for at least 3 years since sclerotia have been found to remain viable for that long. In many camellia plantings, especially large nurseries, this is not always possible, particularly during the busy season. One blighted bloom falling unnoticed between containers can start the infection in a coming season. The picking of diseased blossoms combined with the application of a three inch thick sawdust mulch to prevent apothecial development has also been recommended. While effec-

tive, this is not practicable or possible for many growers. Chemical control affords another means of interrupting the cycle.

A series of slides graphically showed the complete cycle of the disease. Blooms with their brown spots were shown in various stages, and the manner in which the disease eats into the base of the flowers. Pictures were also shown of the sclerotia themselves and how they may be located in the dried flowers.

Dr. Hanson of course recommends spraying with the chemical Captan which he has had a part in developing. Other chemicals such as sulfur and ferimate are also used although no one can say yet positively that any one of them is the absolute answer to this pertinent problem. Dr. Hanson claims much for his product and results are encouraging. It is known positively that the disease does not travel from flower to flower but that the spores may blow from garden to garden or may be transported by wind and rain or, especially that plants having sclerotia may infect a garden. It is not known how far spores, themselves can travel.

Dr. Hanson's talk was of vital interest to the audience. A clinic was held after the break for refreshments in which Dr. Hanson answered questions along with Howard Asper with Edwards Metcalf as Moderator. So, all around, it was an extremely "informing" evening for the society meeting.

C. japonica 'Mathotiana' had been chosen as flower of the evening and winning most points for bringing the best bloom was Dr. Lloyd Taylor with that of W. F. Goertz winning second and James Findley's bloom winning third. Mrs. W. H. Bonner carried off both first and second honors with her 'Gigantea' and 'Lady Charlotte,' while Caryll Pitkin was acclaimed third with his 'Lotus.'

It was rather pleasing to have "foreign" members the recipients of two
(Continued on Page 20)

THE LINTON SEEDLINGS

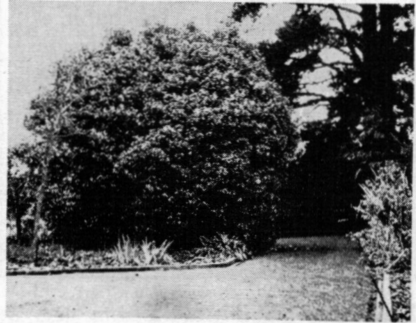
By WALTER G. HAZLEWOOD

In 1884, Alexander Hunter, who owned the Camellia Grove Nursery situated in Liverpool Road, Ashfield, a suburb of Sydney, Australia, sold his business and he took up a large area of new land at Somersby on Mangrove Mountain near the town of Gosford, some 50 miles north of Sydney. Here he built his home and planted a citrus orchard. He also established a garden around the house and this is the place where the Linton seedlings were in later years developed. Hunter was one of the earliest pioneers of this district, and although he had a tremendous job ahead of him in getting the ground cleared of timber and planting his orchard, he still found time to lay out a garden. Amongst the shrubs he planted were four small camellia seedlings. These he put together in the one hole, probably as a temporary measure, meaning to plant them out separately at some future date when he had more time. This never happened and the four plants grew up as one bush and at the present time form a clump twenty-five feet high with a diameter of twenty feet.

George Linton, returning from World War I in 1920 was looking for a property within reasonable distance of Sydney and one with a good water supply to enable him to irrigate his orchard. About this time Hunter was getting on in years and found the place too much for him and looked around for a buyer. Mr. Linton seeing the place was so taken with it that he immediately made arrangements to buy it.

I do not know when Mr. Linton contracted Camelliatis, but sometime in the 1930's he came to me and asked if I would propagate and distribute a number of camellias which he had just named. What he had previously thought to be one camellia bush turned out to be on close examination, not one plant but four and the explanation of this I have already mentioned.

These plants he named 'Alexander Hunter,' after the original owner, a semi-double crimson with a cluster of golden stamens in the center: 'Constance,' a semi-double deep rose vein-



Source of the "Linton Seedlings." This mass of camellias measuring twenty-five feet in height and at least twenty feet in diameter is the result of four seedlings planted in 1884 near Sydney, Australia.

ed crimson; 'Jean Lyne' a semi-double white with pink stripes which has two sports, (one) Edith Linton, a silvery pink and (two) Nancy Bird; the fourth seedling, 'Ruth Kemp' is a semi-double light rose. This latter is favored by florists for make up work as it is rather small.

Of these six seedlings, I consider 'Jean Lyne' and 'Edith Linton' to be the best.

Professor Waterhouse, in his first book "Camellia Quest," has credited these varieties to Alexander Hunter but it was Mr. Linton who first thought them worth naming. In Hunter's time these would not have been considered camellias at all, as the only ones in favor at that time were the formal doubles with some of the

(Continued on Page 10)

Our Cover Flower

The *C. japonica* 'Elisabeth Pink' is a distinctly feminine camellia; a bit variable, some years flowering more satisfactorily than others, but over all to be considered desirable and beautiful.

The heart of the flower is Carmine Rose shading gradually lighter toward the petal margins; in some areas becoming almost white. The habit of the petals to recurve on the outer rows and incurve on the center, gives a distinctive form to the bloom.

The foliage is a glossy green while the plant itself is loosely branched. The 'Elisabeth Pink' flowers in mid-season.

LINTON SEEDLINGS from page 9
peony and warratah types just allowed in on sufferance.

From this group Mr. Linton raised a number of seedlings of which he named two; 'G. C. Linton,' after himself, a semi-double bright red, and 'Virginal.' These seedlings were first listed in Hazlewood Brothers 1941 catalogue.

Apart from these seedlings, Mr. Linton planted out many other varieties and now has a very choice collection. Kewita is the name of his property and it is a must for all interstate and overseas visitors who are at all interested in Camellias.

Adding a nice effect in the garden are also a number of camellias growing in large concrete tubs, among them a sasanqua trained as a standard with the stem about six feet high and the branches trailing downward.

Some eight or ten years ago Mr. Linton planted a number of seeds collected at random from plants in his garden. Some of these flowered for the first time in 1949. Parentage of

some can be traced from their foliage such as No. 29 which is definitely a 'Sode-Gakushi' seedling.

Of those which have flowered to date, Mr. Linton and I consider the following to be the best of them:

No. 10—An improved 'Ruth Kemp' but slightly deeper, reflexes better and holds well either as cut flower or on the bush. First flowered in 1951. Comes into bloom end of May (November in America) and flowers over a long period.

No. 12—Brilliant orange red single, about ten petals: strong, erect grower. First bloomed June, 1951. In 1954 started to flower in April and was still blooming in mid-August.

No. 15—Probable seedling of Edith Linton. Semi-double with similar color but more glowing. First flowered May 1951. Splendid keeper and flowers to end of July.

No. 19—Lovely formal double, deep pink, paler in center. Medium size, free blooming. First flower mid-May 1952. In 1954 flowered from mid-May until end of July.

No. 20—Came up under plant of 'Edith Linton.' First flowered June 6 1952. Color pink with paler shadings; semi-double with petals spaced and ruffled. It has 14 petals and lasted in water 6 days in good condition. Tentative name 'Laurie Bray.'

No. 23—Miniature, about two inches in diameter and an absolute gem. Formal double, crimson, heavily veined. First flowered July 8th 1952. Would be excellent for corsage work.

No. 24—Very large single white with pink and red stripes. First flowered July 6th 1952. Size about five inches in diameter and shaped like a full moon. Has splendid keeping qualities and is very free blooming.

No. 29—Seedling of 'Sode-Gakushi' with the same foliage but flower is a brilliant scarlet crimson. Mostly single but some bloomers are semi-double with a few petaloids. Five inches in diameter and first bloomed June 1953. Has been named 'Red Ensign.'

No. 52—Brilliant scarlet semi-double, flowers over a long period from May to end of September. First bloom May 1953. Keeps well.

No. 54—Delicate pink bud, paling to near white when fully out. Lasts very well on plant. Was undamaged for two full weeks in very windy and frosty weather. Flower size four inches across and two inches deep. First bloom June 1, 1954.

The Camellia Review

Presents a Report of

THE CENTRAL CALIFORNIA CAMELLIA SOCIETY

The sixth in a series featuring our affiliated societies

SIX YEARS ARE BUT THE BEGINNING

By RUTH E. PETTEY

In 1948 Mr. and Mrs. Milo Rowell and Mrs. Pettey combined business and pleasure and made a trip to Southern California during which time they attended the Camellia Show of the Southern California Camellia Society. Mr. Carl Tourje, super salesman, had extended a cordial invitation offering to be our guide, hence we decided to see just how interesting a show of one kind of flower could be.

Mr. Tourje was very sure that Fresno should have a camellia society and we were so enthusiastic after seeing such a display of beauty that we decided to find out how many people of Fresno would be interested in a society.

Enthusiasm Spreads

A meeting was called for March 10, 1949, at the California Hotel, and about a dozen Camellia enthusiasts came. We decided that others could also be interested, so a little publicity was given the idea through the Fresno Bee and numerous telephone calls. The first meeting was held on April 2, 1948. The Southern California Society sent its president, Dr. L. J. Taylor and a number of its members to assist in the organization. The Kern County Society also sent a delegation. This was our beginning.

Each year since its organization, the society has held a show with the exception of 1953. This year's show was held at the cafeteria of the Fresno County Fair Grounds on February 27th. We had a very nice show with many fine quality blossoms and a good attendance. The fact that it is raining or hailing does not seem to dampen the enthusiasm of a true Camellia lover.

Awards

The flower which won first place in the show was the *C. japonica* 'Margaret Higdon' grown by Mr. Homer Wilson. Second was *C. japonica* 'Rainy Sun' shown by Mrs. H. H. Courtright. The honors for the greatest number of blue ribbons went to Mr. Homer Wilson, while Mr. Manyard Munger was the runner-up.

There were many blossoms of outstanding quality in the show. To mention only a few, 'Gigantea,' 'Joshua E. Youtz,' 'Lady Clare,' 'Debutante' and others.

Camellia Garden Tour

A garden tour was held Sunday, March 13th, when members of the society visited a number of gardens among them being the gardens of Mrs. Paul Keane, Mr. Manyard Munger, Mr. Milo Rowell and Mr. Homer Wilson. Mr. Rowell and Mr. Wilson have been interested in and growing Camellias longer than others in the Society. We believe Fresno is especially suited to growing Camellias and more interest in them is being evinced each year.

TO THE LADIES

By CHARLOTTE HOAK

To write about all the highlights of the last meeting of the S C C S would be impossible. We had our thrills while we listened to Mr. Asper talk about his cherished *reticulatas* and like bees around a honey pot we crowded about the display set down for us to examine close-up with all the intriguing names. Would we ever be able to own such treasures as 'Purple Gown,' with its wonderful texture and incomparable coloring? Long ago in China the Mother of Gardens, the richly-robed monarchs paid homage to this same flower.

Next we had a good chuckle at the emphasized "reticulay-ta." Memories go back fifty years and we hear Dr. Getchell speaking to his graduate students in our Botany Seminar. "You should always remember we do not use the Latin pronunciation but rather the continental one, for instance "sub-lay-ta' not 'sublah-ta."

With genuine amusement we noted that Mr. Asper has entered into the province of the ladies in the late clean-up at the Huntington Gardens, even down to the clean fir shaving mulch. Of course somebody would pop up with the question, How about redwood shavings? Those who have lived long in the Land of Living Giants know that fresh redwood shavings are taboo except to clean your paths of weedy growth.

Later in the evening another matter came up for discussion. It was about that Corsican immigrant, *Helxine Solerolii*, which conscientious gardeners call Baby's Tears because it has often caused them to weep. I take the feminine prerogative to differ with the fifty-fifty voters and condemn most roundly this insidious soil robber which is a surface feeder like the camellias, themselves. It makes dense mats shutting out air, a catch-all for spore-propagated diseases such as the dread petal blight, etc. If allowed to romp on uninterrupted, it climbs the trunks of your larger camellias. It makes excellent comfort, however, and at show time you can get rid of your surpluses by giving it by flats to your friends to build up a quick carpet which is much cheaper than

expensive sod. Unwittingly I got this pest years ago from the present of a tiny two-inch pot of it which made a get-away in my garden. It always raises my ire, and the pet name I have for it, I leave you to guess.

The pests are on the move. Everything in that line which destroys the beauty of your garden is awakening into life. Hungry insects are voracious for food. Get them while they are young for in a few days they will be beyond your control. Your last year's mulches have been the winter resting places of the astronomical numbers of spores. You spray on top of your shrubs but forget to rake off the infested mulches underneath and drench the soil beneath before you apply a new mulch. You will uncover the source of many of the tiny snails which appear so suddenly, the jelly-like white bunches looking like tapioca are the eggs. A good slug and snail poison if you are averse to the poisons of the "scorch the earth" type is one whose active ingredient is Metaldehyde and it contains no arsenic. Women are good housekeepers. They have the patience to pursue all garden troubles to the end. Trips, rusts and mildew issue from careless garden management. Use a good clean-up spray, keep your plants healthy and you will not have to stand and spray and SPRAY.

For years women have dealt with feeding formulas. Plants like humans thrive on proper food. The commercial grower however would go broke

(Continued on Page 20)

IMPRESSIONS OF NEW FAVORITES

(speaking of Camellias)

By HARVEY F. SHORT

The recent series of Camellia Shows over the past six weeks have brought the following camellias into more prominent perspective with regard to collector and gardener alike. The incomparable *reticulatas* probably held the spotlight as superior flowers made their way to the display tables this season in a fashion of arrayed artistry and quality that none could resist. More of *Crimson Robe*, *Noble Pearl* and *Tali Queen* at another time.

In the japonicas, the **R. L. Wheeler** was spectacular and nicely colored, fulfilling its promise as a superb variety.

Big Beauty gave excellent performance in size, beauty and vitality and the clear deep rose **Mollie Moore Davis** held its own as a companion flower.

Spring Sonnet was in good form and caught the eye of most visitors. Enough size, unusual mellow coloring and vitality are its merits.

Frances McLanahan, almost a counterpart of **Spring Sonnet**, other than styling of flower and probably habit of growth, should make it equally popular.

Dr. Tinsley, much more in evidence with its delicate coloring and excellent vitality will surely make the 1955 list for most people.

Dr. John Bell, each flower striking with its fine balance of white marking through rich rose pink. It can be notated excellent.

Charlotte Bradford made a pleasing appeal to all admirers, good in both form and color. Will prove an excellent flowering type.

Truly Fair a delicately built, fimbriated flower in a pleasing shade of pink made a hit and some of its good points are contained in its small artistic form.

Reg Ragland of course was immediately pronounced a must with its high coloring and nicely formed bloom, mottled or clear in tone, it is **good**.

Frosty Morn has entered the picture as a flower of most artistic beauty. It seemed to be a favorite with its styling, size and vitality.

NEWS, NOTES AND NOTICES

From Oregon

The Oregon Camellia Society voted *C. japonica* 'Chandler Elegans' the Camellia of 1955. (Wonder if that Camellia would be chosen as the most popular here in Southern California?)

An interesting idea adopted by the Oregon Camellia Society for their Show was a table for Camellias propagated in Portland and vicinity. The list mentioned included 'Doreen' by the Bradleys; 'Bertha A. Harms,' by the Harms; 'Alba Queen,' 'Sweet Bonaire,' 'Barney's Pride,' and 'Monte Carlo,' all by Barney Goletto; 'Mrs. Martha Proppe,' by Proppe; 'Hannah C. Blue,' by Mr. Strauss; 'Susan,' and 'Selina Louise,' by Mr. Grischow; 'Lover's Seedling,' by Mr. Plover and 'Margaret Willey,' by Mrs. Willey. Further information on any of these varieties may be obtained by writing to Andrew F. Sears, 10145 N. Smith Street, Portland 3, Oregon.

From Gulfport, Mississippi

C. japonica 'Lindsay Neill' entered by Ray Hatten, was judged the best flower of the 2nd annual Camellia Show of the Gulfport Men's Society. Although having to be postponed from its original January scheduling the Show was a great success, staged in the beautiful Yacht Club Pavilion overlooking the waters of the Gulf of Mexico.

Temple City, California

The last meeting of the season of the Temple City Camellia Society was held April 11th and was a dinner meeting. Mr. Stanley Miller talked on "Camellias on Four Continents," illustrating the talk with kodachromes.

Following were top award winners at the recent Temple City Society Camellia Show.

S.C.C.S. AWARDS:

Gold Certificate (Sweepstakes): Earl S. Gorton

Silver Certificate (Best japonica): 'Adolphe Audusson, Special,' entered by R. H. Hertenstein

TEMPLE CITY CAMELLIA SOCIETY AWARDS

Sweepstakes: Earl S. Gorton

Best japonica, Amateur: 'Adolphe Audusson, Special,' entered by R. H. Hertenstein

Best japonica, professional: 'Lotus,' entered by Tuttle Nurseries

Best reticulata: 'Lion's Head' entered by Howard Asper

Best Boutonniere: 'Hishi Karaito' entered by Vern McCaskill

Best Seedling: 'Onetia Holland,' entered by J. R. Holland

AMERICAN CAMELLIA SOCIETY AWARDS

Gold Certificate (Sweepstakes): Earl S. Gorton

Silver Certificate (Runner-up): E. C. Bengston

Pomona, California

The Pomona Valley Society's 8th Annual Show was attended by over 4,000 persons and was considered tremendously successful. Some of the awards are as follows:

Sweepstakes winner, Mrs. Herbert Milliken

Best Flower: 'Frizzle White' entered by Mrs. Herbert Milliken

Best arrangement: Mrs. Merle Gish

Best blooming plant not over 3 feet: 'Princess Baciocchi' entered by B. M. Pace

Best blooming plant over 3 feet: 'Finlandia' entered by Floyd Bunnelle

Best Boutonniere: 'Tinsie' entered by Merle Gish

Kern County

More than 13,000 persons attended the Annual Show and this meant that over \$3,000.00 was raised for the Bakersfield Memorial Hospital. (*Ed. note: Sincere congratulations.*)

HARDY CAMELLIAS IN BELGIUM

By ROGER DE BISSCHOP

Tronchiennes, Belgium

It is natural that my nursery should be interested in hardy Camellias, because we are always trying to enlarge our sales territory. During the last three or four years, I have been trying to find Camellias which will grow in our country, outside in the open during the winter time. At the present moment I consider the results of my experiments as very encouraging.

I have about two thousand plants growing outside around our nursery of many different ages and many varieties.

During the first year of the experiment, I set out one year grafts in cement beds with a top made of heavy planks two inches thick. The soil around the plants was covered with dead leaves. The next year I transferred these plants to well drained beds and during the winter again used dead leaves as a mulch. The heavy planks were removed, but the plants were wrapped in straw as a protection. During the third year and thereafter all protection was removed, except of course that the beds are in the best possible position to avoid icy winds. The varieties CONTESSA LAVINIA MAGGI, LATIFOLIA, MATHO-TIANA, CHANDLERII, ADOLPHE AUDUSSON and some others resist the cold quite well. Others are not so good.

We have no trouble with the roots, which always remain healthy, but frequently the stem will burst open during a heavy freeze. My experience to date indicates that the late flowering varieties, that is those due to blossom in April and May, are the best. Usually the earlier varieties are not satisfactory. Camellias which were three to four feet high when I planted them outside in the garden of a friend, have flowered every year—each year bigger and better than before. These were all late varieties and the buds were not injured. Quite often though the buds are destroyed on Camellias which open too early. Last year we had a cold spell lasting twelve days with the temperature running 9 degrees (F.).

In general, I conclude that for successful growing out of doors in the wintertime, it is necessary to be in a section not too far from the sea. There must be plenty of humidity. Camellias may be expected to grow in the cold of Western France, Belgium and Holland, but will not survive in Germany for example. Considerable humidity is necessary for winter growing out of doors.

I look forward to receiving *C. rusticana* so that I may make further experiments. If as reported it will grow in the snow, I can enlarge my market in Denmark, Finland, Sweden, Norway and England.

NEWS, NOTES AND NOTICES

(Continued from Page 14)

Pacific Society

The Pacific Camellia Society held their annual show on February 19 and 20 in Glendale and reports the following award winners:

Sweepstakes: Dr. C. H. Eshelman.

Best japonica, amateur: 'C. M. Wilson' entered by Dr. E. C. Hubbs.

Best reticulata, amateur: 'Lion's Head' entered by J. O. Henry.

Best Arrangement: Bob Jensen

Best plant: 'Iwane' entered by Mrs. J. W. Robinson.

Finest Pacific Coast Introduction: 'Guest of Honor', seedling entered by Harvey F. Short.

(Continued on Page 16)

NEWS *from Page 15*

Best Miniature: 'Hishi-Karaito' entered by Vern McCaskill.

Best reticulata, professional: 'Crimson Robe,' entered by Julius Nuccio.

Best japonica, professional: 'Big Beauty' entered by Coolidge Rare Plant Nursery.

The American Camellia Society Gold Certificate was awarded to Dr. C. H. Eshelman while the Silver Certificate was won by Dr. E. C. Hubbs.

San Diego

The San Diego Camellia Society reports the following winners in their 8th Annual Camellia Show:

Sweepstakes: Dr. R. W. Tellam.

Best japonica, amateur: 'Bride's Bouquet,' entered by Dr. E. C. Hubbs.

Best reticulata, amateur: 'Noble Pearl,' entered by Dr. E. C. Hubbs.

Best flowering plant: 'Finlandia,' entered by Mr. and Mrs. Byron Lindsley.

Best amateur reticulata courtesy exhibit: 'Noble Pearl,' entered by Mr. and Mrs. Stanley Miller.

Best amateur japonica courtesy exhibit: 'Ville de Nantes,' entered by Mrs. Albert Dekker.

Best graft: 'Mrs. Charles Simons,' entered by Les Goodall.

Best japonica, commercial: 'Frizzle White,' entered by Mr. and Mrs. J. W. Bradford.

Best reticulata, commercial: 'Butterfly Wings,' entered by Green Valley Nursery (Howard Asper, Jr.).

G. Scott Campbell Memorial Award: Mr. Lester Goodall for best graft.

The American Camellia Society Gold Certificate was awarded to Dr. R. W. Tellam while Dr. E. C. Hubbs was awarded the Silver Certificate.

GARDENING IN CALIFORNIA IS DIFFERENT

That is why newcomers need an exclusive all-California garden magazine with planting calendar for different sections of the state. SUBSCRIBE TO —

“GOLDEN GARDENS”

An All-California Garden Magazine

Official Publication of California Garden Clubs, Inc.

ONE YEAR \$1.50 — TWO YEARS \$2.75

340 South San Pedro Street

Los Angeles 13, California

Telephone: *MAdison 6-8095*

BOORMAN'S
CAMELLIA GARDENS

Featuring the new Reticulatas, and Sasanquas
and the new and choice varieties in Japonicas.

9328 E. BROADWAY

TEMPLE CITY

AT. 6-3401

CONTROLLING SOIL SALINITY IN CAMELLIA CULTURE

By HAROLD E. PEARSON

Before discussing the tolerance of Camellias to soil salinity, the differences between alkaline and saline soils must be clearly understood. Camellia growers are more or less familiar with the term alkaline as opposed to acid soils. The degree of alkalinity or acidity is measured in pH units. An acid soil has a pH below 7, neutral soils have a pH near 7, and soils with a pH above 7 are alkaline. Southern California soils are usually neutral or slightly alkaline, and the camellia grower has given considerable attention to the problem of providing a slightly acid environment by the use of acid-peat, sulfur and other acid soil conditioners. In spite of these precautions, camellias on acid soils have not always thrived. Sometimes irrigation or fertilization methods give rise to a saline soil. The various mineral salts contained in irrigation waters and fertilizers may accumulate in the soil due to insufficient use of water or overdoses of fertilizers. These salts in the soil may have no appreciable effect on the pH of the soil, or in some cases they may cause the soil to become either more acid or more alkaline. Thus it is possible to have acid and alkaline soils which are non-saline, acid-saline soils and alkaline-saline soils.

Since the relative importance of these various soil conditions on camellia growth had not been thoroughly investigated, it was believed that controlled studies on pH effects and salinity effects would be useful to camellia growers. The following report summarizes the results of experiments with camellias grown with culture solutions at various salinity levels. Dr. James Bonner has reported on the effects of pH on camellia culture, and the control of pH will not be discussed in this report except to illustrate where confusion exists in trying to control alkalinity and salinity.

Young Pink Perfection camellias, propagated from cuttings, were planted in a medium consisting of 3 parts of No. 4 gravel and 1 part of acid peat. The plants were watered daily with a culture solution containing the required nutrient minerals and vari-

ous amounts of added salts, principally sodium sulfate, sodium chloride, and calcium sulfate (gypsum). In most cases these salts were mixed in several proportions to vary the relative amounts of calcium and sodium in the solution. The total amount of nutrients and added minerals ranged from 800 parts per million to 8400 parts per million (ppm). Seventeen different treatments were established and observations were made on growth rates and the appearance of abnormal symptoms in the foliage. It is important to remember that the entire root system was drawing water and minerals for its nutrition from these solutions which were maintained at the desired concentration throughout the experiment.

After 3 or 4 months some response was noted in the plants grown with the more saline solutions. The leaves showed minor tipburn on a few plants treated with culture solutions containing 3500 and 4300 ppm. of total dissolved salts. The amount of tipburn increased progressively as the salinity of the cultures increased to 8400 ppm. in those cultures containing a mixture of sulfates and chlorides in a ratio of approximately three to one, respectively. The most severely injured plants were grown in a culture containing 1750 ppm. of sodium chloride added to the nutrient medium making a total of 2700 ppm. During

(Continued on Next Page)

this period, there was relatively little difference in the growth and appearance of plants growing in media with a high calcium and low calcium status in relation to the amount of sodium present.

With the advent of the next growing season, those plants in cultures containing more than 4300 ppm. total salts failed to initiate new growth or in some cases the buds swelled and subsequently withered. Plants treated with culture solutions containing 3100 and 3500 ppm. were normal as evidenced by the absence of tipburn, but the growth was a little slower than in the nutrient cultures with no sodium sulfate or sodium chloride additions.

Many factors such as light intensity, temperature, and relative humidity of the air influence the response of plants to saline soils. Under the conditions of this experiment, the tolerance of the Pink Perfection camellia to salinity due principally to sodium sulfate was in the neighborhood of 3000 to 3500 ppm. The tolerance to sodium chloride was much lower, but the range of concentrations chosen does not give a precise figure. The presence of chloride, expressed as sodium chloride probably should not exceed 1000 to 15000 ppm. If the conditions for growth had been more favorable the degree of injury at a prescribed salinity level would have been less manifest. Contrariwise, with a less favorable environment, a lower range of tolerance might have been indicated. Different camellia varieties display individual response with respect to soil salinity just as they show difference in sensitivity to sunburn or frost injury.

From the camellia grower's point of view, the recognition of symptoms of saline injury and the means of controlling salinity is of greater importance than the exact degree of tolerance under some set of conditions which might be different than his. The most typical symptom of salinity

is the browning of the tip or margins of old, mature leaves. Following the initial appearance of the dead area, it spreads over a larger portion of the leaf until it drops. Slow growth may also indicate the presence of salts in the soil, lack of fertilizer or haphazard watering methods.

Another abnormal leaf symptom is marked by gradual loss of color at marginal areas on young foliage followed by collapse and drying which causes a cupping under the leaf. Leaves showing this type of injury usually drop prematurely. This condition is not specifically related to high salinity for it seems to be associated with more than one form of malnutrition of camellias. In certain cases the calcium absorbed by the leaf is subnormal and an excess of potassium or sodium is found in the leaf. This suggests the need of an adequate calcium supply to maintain a balanced nutritional status and to prevent the absorption of too much sodium and potassium by the camellia roots. Sodium can accumulate in the soil from irrigation waters, and manure applications may also introduce sodium chloride. High amounts of potassium may be introduced by fertilizers.

The mineral salts dissolved in the irrigation waters used extensively in Southern California are not present in large enough quantities to cause direct injury to plants. The total salines in these waters varies from 250 ppm. to 800 ppm. If irrigation methods do not provide for the movement of some water below the root zone it is apparent that the minerals contained in the water will multiply in concentration as the evaporation and transpiration removes much of the water between irrigations. It will merely take longer for the concentration of these minerals to reach critical levels when using waters of lower mineral content. For example, if a camellia uses one half of the soil moisture each week between irriga-

tions, the 800 ppm. water in the absence of any drainage would have increased the concentration of the soil solution to 3200 ppm. after 7 weeks, and the 250 ppm. water would produce the same result in 25 weeks.

Fortunately, most camellia growers have provided good drainage for their plants in order to remove excess water during the period of heavy rainfall. By applying extra irrigation water to move mineral salts below the root zone, the good drainage can be made to serve a dual purpose. As indicated in the previous paragraph the frequency of these heavy irrigations to prevent the accumulation of salts in the root zone depends on the degree of mineralization of the water.

Part of the constituents of irrigation waters contribute more to making the soil alkaline than they do to increasing soil salinity. Calcium bicarbonate and sodium bicarbonate fall into the former category. Sulfur and other acidifiers are beneficial in offsetting this effect of alkalinity. When the sulfur or soil acidifier is added, the instructions suggest that the material be watered in thoroughly. If these instructions are followed, the plant often makes improved growth.

If through failure to water heavily, the plant failed to respond even though the soil was now acid, the original trouble may have been due to soil salinity rather than soil alkalinity. The combination of acidification and heavy irrigation has probably solved a considerable number of cases diagnosed as alkalinity problems which were in reality salinity problems. The copious use of irrigation water cures most salinity problems without additional treatment. When leaching with soft waters which are low in calcium and magnesium, it is sometimes necessary to add sufficient calcium or magnesium to the soil to maintain a balanced nutritional

for the camellia. Liberal applications of gypsum will not harm the soil, and it can be used to restore the calcium supply to an adequate level.

The relative amounts of the saline and alkaline constituents in waters can vary widely. The saline portion may vary from one-fourth of the total dissolved solids to three-fourths of the total. In the case of the softened Colorado River water in which the writer is especially interested, about 77% of the elements present out of the total of 740 ppm. contribute to soil salinity if inadequate leaching methods permit an accumulation of these salines in the soil. In order to prevent the accumulation of sodium sulfate, the principal constituent of the softened Colorado Aqueduct water, in the root zone of camellias, an extra heavy irrigation is desirable at least once every 6 to 8 weeks for field-grown plants. Plants in containers require more frequent irrigation; therefore, the leaching process should receive attention at shorter intervals.

It must be borne in mind that heavy irrigation tends to leach away some of the valuable fertilizer elements, especially the nitrate nitrogen. In order to maintain soil fertility, water soluble fertilizers should be applied after the leaching process is completed. The use of slowly-soluble organic fertilizers can overcome this difficulty very satisfactorily. The organics referred to are cottonseed meal, bone meal and fishmeal.

Camellias came originally from regions of heavy rainfall and high humidity. Under these conditions they were accustomed to well-leached, well-drained soils of low saline content. To obtain maximum growth of camellias, salinity levels should be kept as low as possible. This can only be done by proper attention to fertilization and irrigation methods.

"THE CAMELLIA"

What to Do

Approx. 300 questions and answers from experienced camellia growers.

The most helpful book ever published

35¢ Post Paid

Discount to Garden Clubs, Nurseries, Book Stores, etc. on 25 or more copies.

ALSO STILL AVAILABLE

1953 Edition of "CAMELLIAS AS A HOBBY"

Over 20 Flower Reproductions
"Some in Color"

If not in your Library order now!

\$1.05 Post Paid

SPECIAL CAMELLIA SEED

from

Select Oregon Garden Varieties

5¢ per seed

Some of the finest new seedlings originated here!

OREGON CAMELLIA SOCIETY

P.O. Box 502 Portland, Oregon

TO THE LADIES from Page 12

if he was compelled to use some of your favorite formulas such as red-wood snow-line leaf mold, Georgia and Idaho peat, to say nothing of the trace minerals and carefully prepared composts which go into your mixtures.

I know a camellia fan who improves every visit she makes to the mountains; and boxes and bags of Mother Nature's choicest mixtures along with crushed gravel for minerals and drainage come back with each trip.

After all the things at the meeting which inspired us, instructed us and amused us were over, there were some other items which sent the chill of fear down our spinal columns. We sat and listened to Dr. Hanson, wondering if our beloved camellias could be affected with that dread fungus disease, Petal Blight. We went home to have a mushroom nightmare and got up at the break of dawn to hunt these terrible "mushrooms" (sclerotia). If you have observed a good program of prevention, you found sun-scorched petals from unusual winter heat, and frozen petals due to the heavy black frosts after a warm spell, but breaking the bloom apart you did not find these miniature mushrooms, the seat of the fungus.

Some of us have been following this program of prevention which was outlined for us by the late Dr. William Jonson of the Destruxol Corporation. Ask for their Bulletin No. 101. This gives the treatment Dr. Jonson advised when he was called in consultation in the south around the New Orleans area before 1948.

SCCS from Page 8

of the sale plants as Miss Alice Tinkham of the Los Angeles Society carried one home and another went to LaVerne with Floyd Bunnelle president of the Pomona Society.

Camelliana

From Greenville, S. C.

The Greenville News of March 6th published a very interesting article by David Tillinghast about the camellia season in that vicinity which resulted in the cancellation of most of the scheduled Camellia Shows owing to the freakish cold which blighted the blooms.

The first blow fell in November when the mercury dropped to 19° catching the plants before dormancy had started. Then in February the mercury went down to 12° and this was the killing blow for the shows.

Of course, Camellia plants have enough resilience so that they themselves will for the most part escape dangerous damage.

In order to ascertain which Camellia varieties best can withstand this great temperature change in the Greenville area, Dick Lashly, a Camellia fancier who grows Camellias both outdoors and under glass, made a check on nearly 100 varieties grown out of doors there. Feeling that his findings may be of real constructive interest to many of our readers, we reprint his lists.

Mr. Lashly found that the four Camellias withstanding the cold very well were General George Patton, Francine, Debutante and Pink Perfection. His four classifications follow:

UNDAMAGED: Monarch, Fanny Bolis, Marquis D'Exeter, Governor Mouton, (red), Vedrine, Tri Color Sieboldi, Professor Sargent, Dixie, Mrs. Chas. Simons, Berenice Boddy and some Pink Perfection.

SLIGHTLY DAMAGED (will open and show brown): Francine, Concordia, Sara Frost, Herme, Eugene Bolen, Adolphe Audusson variant, Pope

Pius, Chandler's Elegans, Panache, Elena Nobile, Rose Dawn, Debutante, Mathotiana Variant, Col. Firey, Kellingtonia, Eleanor Hagood, Marchioness of Exeter, Rev. John Drayton, Imperator, Gen. Patton, September Morn, Magnoliaeflora, Admiral Nimitz, Mathotiana Alba, Firebrand, Amabilis, Kumasaka, Purity and Leucantha.

COMPLETELY DAMAGED, (still carried by plant, will not open): Augusta Wilson, Pride of Descanso, White Queen, Laurel Leaf, Ella Drayton, Haku Tsuru, Shira Botan, Cameo Pink, Longview 67, Countess of Orkney, Audusson, Florence Stratton and Rainy Sun.

DROPPED ALL BUDS: Gigantea, Elizabeth, Lady Van Sittart, Daikagura Variant, Daikagua red, Margaret Madsen, Black Dragon, Mathotiana, Brilliant, Mrs. Charles Cobb, Pink Star, Blood of China, Eugene Lize, Mary Charlotte, Mildred Seydel, Ethlington White, Alba Plena, Latifolia, Ville de Nantes, Elizabeth Boardman and Rev. John Bennett.

Mr. Lashly does not believe in special efforts to protect plants in the open from cold spells such as wrapping burlap around them. If this touches the foliage, it fails to do the job and if it is airtight and is left on the plant for any length of time, the sun may heat the enclosed air to detriment of both shrub and blooms.

Hardy varieties, believes Mr. Lashly, properly located and kept vigorous and not allowed to get dry in danger periods, will take a lot of adverse weather without any protection.

Mr. Lashly is furnishing some of his finest Camellias to the South Carolina Camellia Society for its part in the 1955 Cherry Blossom Festival in Washington, D. C., where Mrs. Dwight D. Eisenhower or her representative will be presented with some of them.

THE BEAUTIFUL ONETIA



Entered for the first time in any show, the *C. japonica* 'Onetia Holland' is modeled by the real-life Onetia Holland and took a blue ribbon at the Pomona Society's Show. This flower was also judged best seedling at the Temple City Show.

AUSTRALIAN AND NEW ZEALAND CAMELLIA RESEARCH SOCIETY

The inaugural meeting of the New South Wales Branch of this organization was held March 14th in Sydney, Australia. Branch Societies will be organized in each province and in New Zealand.

Fifty members attended the first meeting.

FOR SALE

The Secretary of the Society has the following books for sale:

Our own book, "The Camellia, Its Culture and Nomenclature," a 1954 revision \$1.25 or \$.75 each in lots of not less than 12.

"Camellias in the Huntington Gardens," by William Hertrich. \$10.00.

"The Yunnan Reticulatas," 50¢.

"Old Camellia Varieties," a list with brief descriptions compiled at the request of the Council of the Royal Horticultural Society of the R.H.S. and the British Museum, by A. I. Ellis. A 374 page, 9x11 book, reprinted by permission by Mr. Ralph Peer. \$5.00.

"Two Cats and Forty Camellias," a 136 page story form about the growing of Camellias mixed up with cats and cooking by our own member Elizabeth Councilman of Councilman Acres. \$3.00.

"Flower Arrangements of the Ohara School" the 1952 edition. Printed in English in Japan in folder form this book has six pages of descriptive matter and twenty-four colored prints in the Japanese manner. \$4.60, from \$10.00 to \$12.00 in bookstores.

"Camellias, Kinds and Culture," by M. Harold Hume. \$6.00.

"The Camellia, What to Do," published by the Oregon Camellia Society. 35¢ postpaid.

"Camellias, Illustrated," by Morrie Sharp. \$5.00.

COUNCILMAN CAMELLIA ACRES

Dragon Lady — Undaunted — Queen of the Acres
Dr. Ralph Gladen

CLOSED TUESDAYS

Wholesale and Retail Growers

Write for our Price Lists

11549 East Bryant Road
200 ft. West of Peck Road

El Monte, California
Phone: FOrest 8-6582

Camellia MAIL BAG

From Columbia, S. C. Frank Griffin Writes:

Our tour composed of 300 Camellia lovers will leave about May 10, 1956 for London. Will go to Scotland and back to London for Chelsea Flower Show. After seeing gardens in Britain, including the Royal Gardens at Windsor Castle, we will go to Paris, Belgium and Holland. We will fly to and from England via B.O.A.C. and will be gone 30 days. A side trip will be made to Bodnant Gardens in North Wales. Any Camellian wishing to make a reservation should write me.

Ed. Note: It sounds like a wonderful prospect and something to dream about. Any stowaways accepted?

From Alexandria, Virginia Charles F. Holden Writes:

I think you will find the enclosed clipping from the Washington, D.C. Star of considerable interest when you learn that the booklet referred to in the article is none other than the S.C.C.S.'s excellent book on "The Camellia, Its Culture and Nomenclature."

Our Society was organized in January of this year with sixty seven charter members and at our first meeting, 106 people turned up. At our organization meeting it was determined

to give to each member as part of the membership fee, the finest book we know anything about for the beginner as well as for the better informed amateur.

On top of all this excitement, we are going to put on a Camellia Show April 13-14th at Bethesda-Chevy Chase which will be the first annual show sponsored by the Society.

Norfolk is generally regarded as the Northern outpost in Camellia culture in these parts but we hope in a few years to give some of the private gardens a run for their money although it will not be possible ever to equal the wonderful planting in the Norfolk Municipal Gardens. At home Mrs. Holden and I have about 100 varieties which is an indication of what can happen when the bug hits hard.

Permit me to personally congratulate you on the splendid job you are doing with the "Review," and our regret is that it does not come each month throughout the year.

The clipping enclosed was most attractively illustrated by fine reproductions of 'Kumasaka' and "Magnoliaflora" and 'Alba Plena' enhanced by Miss America of 1954 (Lee Ann Meriwether). The article described the formation of the Camellia Society of the Potomac Valley with Milton H. Brown as President and Mr. Holden as Vice President.

(Continued on Page 25)

A Brand New Camellia Color In Our Te Deum Sport

JACK McCASKILL William Hertrich Award—1954

Te Deum's size and form in an antique rose, veined with amethyst, shading to a rich burgundy at the center, and each petal edged with silver.

GALLON GRAFTS: 12-18", \$12.50; 18-24", \$15.00

NO CATALOGUE

McCASKILL GARDENS

25 S. MICHILLINDA AVE.

E. PASADENA 10, CALIF.

LET US REMIND YOU
IT IS TIME
TO FEED YOUR
CAMELLIAS

Camellia Fertilizer

It costs you less to use Bet-er Growe because only small feedings are necessary.

And for other plants in your garden Azalea, Gardenia, Rose and Sweet Pea Bet-er Growe Plant Foods.

~
Buy it from your Dealer

~
For information

**COAST AGRICULTURAL
FERTILIZER CO.**

2785 E. Foothill, Pasadena 8, Calif.

Bamico Says...

For the very best in Camellias shop at Bamico, your one stop Garden Center.

For the finest in House Plants we suggest a visit through our greenhouses.



MEMBERSHIP APPLICATION

BOARD OF DIRECTORS, SOUTHERN CALIFORNIA CAMELLIA SOCIETY,
c/o Secretary, 40 N. San Rafael Ave., Pasadena 2, California

I hereby make application for membership in your society and enclose \$5.00 for the current year's dues.

Name
(please print or type) (Husband and wife combined same rate)

Street

City..... Zone..... State.....

Business

Sponsor
(signature)

APPLICATION MAY BE MADE BY LETTER IF PREFERRED

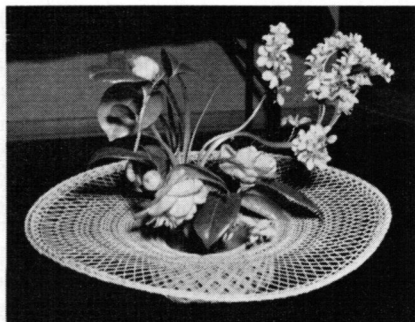
MAIL BAG from Page 23

Emphasis is to be placed on use of the Camellia as an out-of-doors plant and the choice of varieties that bloom either early or late as these periods are more amenable to Camellia blooms in that territory.

For some years the Glenwood Road Garden Club has devoted much time and effort to Camellia culture and the first Camellia show for this area was sponsored last year by the Takoma Horticultural Club.

Ed. Note: The above letter and the clipping were certainly very welcome and we hope to hear a lot more about Camellias in the Potomac Valley. We are sure that the new members will find our Nomenclature Book full of answers to their Camellia problems and we venture to hope that the Review will be of service to them too.

AT THE SCCS SHOW



"Talking through your hat with Camellias" might be the title for this delightful arrangement by Clara Melovidoff which won first in the class of basket arrangements.

We wish unlimited good fortune and happiness to the new Society—with Camellias as its inspiration (and non-political) Cult, how could it be otherwise?

Presenting for your gardening pleasure

CAMELLIA JAPONICA

CAROLYN TUTTLE

Exciting new seedling, a large rose opal-pink of the full peony form with the finest growth you have ever seen.

SEVEN-FIFTY EACH

TUTTLE BROS. NURSERIES

729 Atlanta St., Altadena, Calif.

SY. 7-1177

Best of the old . . .

Finest of the new . . .

Available Now!

The New Reticulatas: Frosty Morn, Drama Girl, Masquerade, Pink Shadows, Thomas D. Pitts and many others.

NUCCIO'S NURSERIES

3555 CHANEY TRAIL, ALTADENA, CALIF.

SYcamore 4-3383

New Sport Announced

A new sport of Elegans (Chandler) Var. is in the offing. It has the same form as the parent, with outer guard petals a very light blush pink and center petaloids of cream white, some of which petaloids are occasionally marked deep pink. It has been named "Barbara Woodroof." Needless to say, it will be well worth waiting for."

CAMELLIA REVIEWER *from P. 2*
tween all such charmers we'll be grateful.

Oh What's Money When Camellias Beckon

An all-too familiar problem was stated by an S C C S member who the other evening practically denuded his wallet and pockets of money to buy Camellia books and an intriguing Camellia. "It's an endless circle," he sighed. "Once more I'll have to borrow money from my boss for bus fare tomorrow to get to work to earn money to buy more Camellias."

Colorado Has Camellias, Too

Among people who attempt what appears to be the impossible, meet the Kindels, who grow and sell Camellias in Denver, Colorado. That high city with its cold beauty overlooked by the higher chill of Camellia-less Pike's Peak is the home of Mr. George Kindel and sister Miss Margie Kindel. Mr. Kindel dashed in and out of Southern California recently.

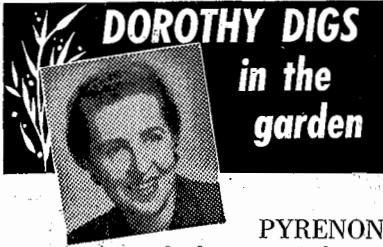
A business that is the outgrowth of a hobby is always interesting, and such is the case with the Kindels. Their father in his days of retirement built himself a hobby greenhouse, and among the many plants he grew were a few Camellias. The Camellias grew and grew becoming larger with more beautiful blooms each year, and in their quietly insidious way their blooming beauty fired the Kindels' imagination. In the past Denver flo-

rists had sold few Camellias owing to the fact that importation of the blossoms was expensive and risky. The imported blooms, which can not be so fresh as locally grown blooms, had the very bad habit of falling apart when the Denver damsels had chosen them to wear for an evening of dancing. And often they would fall apart before the florist could manage to make them into a corsage. This problem has now been solved by the Kindels. From their 700 plants, greenhouse, Camellia corsages are not only possible for the Denver damsels, but are becoming popular with many folk who had never seen Camellias before.

Mr. Kindel says that even when Camellias are greenhouse grown with temperature and humidity controls, the blooming season of Camellias in Denver varies from year to year, depending on climatic conditions. Ordinarily the blooming season begins in earnest in mid-October and continues until mid-April. However, the season can vary as much as a month in either direction, and it is always hoped that the season continues through Easter and Mother's Day when the demand for corsage flowers is heavy.

As to varieties of Camellias grown, the Kindels are growing nearly eighty different Japonica varieties—so many different kinds because the Denver public is learning that there is a Camellia to match any gown the lady may choose to wear, and as wholesalers of Camellias, the Kindels want to supply "just the thing" to the florists. Just as in California, the Debutante is probably the most widely used for corsage wear, but this, too, depends on how the flower is to be worn. For hairdos and wristlets the smaller flat flowers are preferable, and for casual wear the bright stamened flowers find their place.

Mr. Kindel was sorry not to be able to stay long enough to see our
(Continued on Page 28)



The "Big Moment" for your Camellias comes at the end of the blooming season. Having done their work, they look forward to food and rest. Fertilize and mulch and give them comfort in the form of a clean-up spray with SUPER DESTRUXOL, with 2 teaspoons of Destruxol's PYRENONE added to each diluted gallon. This mixture controls the many infestations prevalent on Camellias at this time of year, without injury to plant or soil. You may have our Complete Care of Camellias Bulletin FREE on Request.

Dorothy Diggs
DESTRUXOL Corp. Ltd., Pasadena 1, Calif.

DON & BLANCHE MILLER CAMELLIAS

WHOLESALE AND RETAIL GROWERS

MARJORIE MAGNIFICENT
 MRS. FREEMAN WEISS
 MAGNOLIAEFLORA (Southern)

ANN MILLER
 MRS. TINGLEY
 ROSEA SUPERBA

Retail (In rear) 6212 San Gabriel Blvd. San Gabriel Phone AT. 7-7982

Wholesale & Retail — 331 W. Duarte Rd., Monrovia
 (A.M. only) Phone EL. 8-5100

INDEX TO ADVERTISERS

Bamico Gardens	24	McCaskill Gardens	23
Boorman's	16	Membership Application	24
Destruxol	27	Miller's	27
Councilman Camellia Acres	22	Nuccio's Nursery	25
Golden Gardens	16	Oregon Camellia Society	20
Marshall's Camellia Nursery.....		Patio Wood Products....	Back Cover
Back Cover		Tuttle Bros. Nursery.....	25

Advertising rates in the Camellia Review are as follows: Inside back cover, \$30.00. Full page, \$25.00. Half page, \$15.00. Quarter page, \$8.00. Advertisements may be sent direct to the Editor, Elizabeth Beebe, 706 S. Fair Oaks, Pasadena, Calif.

CAMELLIA REVIEWER from P. 26
Society's show especially since he has been a S.C.C.S. member for several years. Duties were pressing—among them, quote, "I have 10,000 snapdragons to transplant right away."

Privately, we think he was missing his Camellias just a teeny bit—too.

Camellia Triangle

Getting one's husband interested in Camellias is pleasant but what if he gets *too* interested? A couple of wives of our most avid Camelliaphiles were comparing marital notes at the show and in spite of the fact that both husbands were blue ribbon winners, the wives were complaining that all the attention at home was being paid to Camellias. "I've been practically on the point of getting a divorce," said one while the other admitted, "Well, I have too." At this juncture we had to suggest, "Maybe you'll just have to give an ultimatum—Camellias or you." They both looked at us in horror, "Oh, we'd never dare do that—" they chorused as we broke up laughing.

They're Even In Print

Camellias are quite in the news around here these days. Old camellias get their pictures in the papers regularly such as the *C. japonica* 'Covina' on Los Robles in Pasadena which measures 20 feet around and sixteen feet high. It is reported to be from 25 to 30 years old. However no sooner than this came out, there appeared the picture of a twenty-eight foot *C. japonica* 'California' which was purchased seventy years ago from a Japanese sailor. It is reported to have grown for nearly thirty years unprotected from the sun. Then its owner put a lath framework over it and on one side, but this was removed some years ago so it has continued upward and outward with no special care other than a yearly fertilizing and regular watering. After this story appeared one columnist picked up the deluge of mail that

was received boasting of much older camellias, and wrote up the old history of camellias in America, quickly putting in their places those who think of a thirty-year old camellia as being old. Well, nothing like spreading camellia information through this newsworthy flower.

Traveler's Tale

E. W. "Doc" Miller paused in our vicinity long enough in his travels to visit our show and tell us how well Camellias of the northwest withstand cold there. Being familiar with that territory we know of the long periods of damp chill to which they are exposed, which of course conditions them to drops in temperature. While Mr. Miller was in Seattle, that city experienced a "silver-sleet" as they call their cold after-rain freezes. And Mr. Miller reported to us that he saw Kumasaka blooms entirely encased in ice for several days duration from which the flowers emerged unscathed. Well anyhow, that's what Mr. Miller told us. Perhaps it is only a coincidence that he left immediately afterwards for a trip to Europe.

Variogated Maybe?

It's a well known fact that things, including people, that are intimately associated for a long period of time sometimes grow to resemble each other, and in this connection, have you noticed Harvey Short's ears? Don't you think they are commencing to look like Camellia petals just a weeny bit? Well, true or not, as far as we are concerned, if we ourselves are going to resemble somebody or something we wouldn't at all mind growing to look like a gorgeous Camellia

says

Liz

For record, reference and convenience, we print the list of current members of the S C C S in this issue of the Review. Are you there?

MEMBERS OF THE SCCS

CALIFORNIA

- Dr. Bruce K. Adams
4650 Encinas Dr., La Canada
Agricultural Reference Library
Univ. of Calif., Los Angeles 24
- Mrs. L. L. Aldrich
1016 San Miguel Rd., Concord
- Mr. and Mrs. H. Allison
801 W. San Bernardino Rd., Covina
- Mrs. Wm. H. Andrews
2080 San Pasqual St., Pasadena 10
- Mr. and Mrs. R. Howard Annin
1805 Warwick Road, San Marino 9
- Fred and Alice Anthony
11327 Ranchito St., El Monte
- J. Clifford Argue
4714 El Camino Corto, La Canada
- Mr. John A. Armstrong
Armstrong Nurseries, Ontario
- Mr. Sherman Asche
464 Bellefontaine, Pasadena 2
- Mr. and Mrs. J. H. Asper
1405 Flanders Rd., La Canada
- Mrs. H. W. Barmann
885 E. 5th St., Chico
- Mr. Richard A. Beattie
1891 Wagner St., Pasadena 8
- Elizabeth Beebe
706 S. Fair Oaks, Pasadena 2
- Mrs. Clark E. Bell
1342 Circle Dr., San Marino
- Mr. Paul W. Bell
1611 Spruce St., South Pasadena
- Mr. and Mrs. C. S. Van Benschoten
8413 E. Beverly Dr., San Gabriel
- Fred T. and Leonora W. Bergstrom
4071 Dover Road, Pasadena 3
- Mr. H. E. Bergstrom
2595 Sycamore Dr., San Marino 9
- Mr. William F. Best
12223 Shetland Lane, Los Angeles 49
- Dr. W. E. Bones
14975 Corona Del Mar, Pacific Palisades
- Dr. James Bonner
424 S. Chester, Pasadena 5
- Mrs. W. H. Bonner and Mrs. Eleanor Hayward, 472 Royce St., Altadena
- Mr. K. L. Boosey
Secy.-Treas., Camellia Society of Santa Clara Co., 119 Cleaves Ave., San Jose
- Fern Boster
2032 Fletcher Ave., South Pasadena
- Botanical Garden
Strawberry Canyon, Berkeley 4
- Mrs. Ruby F. Bowman
160 Brandon Way, Fort Bragg
- Mr. and Mrs. Louis M. Branch
615 11th St., Antioch
- Mr. C. Breschini
1498 Hicks Ave., San Jose
- Owen R. and Vera J. Bristow
743 E. Base Line, San Bernardino
- Mr. Harry A. Bronson
1075 Lincoln Ct., San Jose 25
- Mr. and Mrs. Clifford A. Brown
8359 E. Duarte Rd., San Gabriel
- Mr. and Mrs. John A. Brown
5342 N. Huddart Ave., Arcadia
- Ramona B. Brown
609 E. Main St., Turlock
- Mr. Wallace H. Brown
Pres. Northern Calif. Camellia Society,
201 The Uplands, Berkeley 5
- Lawrence R. and Alice W. Bryant
409 Coolidge Dr., San Gabriel
- Dr. Arthur H. Buell
1052 Amelia Dr., Long Beach 7
- Mr. and Mrs. Albert F. Burke
1340 W. "F" St., Wilmington
- Mr. and Mrs. Harry G. Busby
329 N. Alabama St., San Gabriel
- Mr. and Mrs. Harold H. Butterworth
1369 W. Haven Road, San Marino 9
- Shirley T. & Edward L. Butterworth
1145 Singing Wood Dr., Arcadia
- The Librarian
California State Polytechnic, San Dimas
- The Librarian
California State Polytechnic, San Louis
Obispo
- California Garden Clubs, Inc.,
201 San Marcus Ave., San Francisco 16
- Mr. and Mrs. Edward L. Callahan
9072 Arcadia Ave., San Gabriel
- Mr. Horace Campbell
8601 E. Longden, San Gabriel
- Stanley Frederick Card
1616 Encino Ave., Monrovia
- Mr. William Herbert Carr
175 Fair Oaks Lane, Atherton
- Mr. Harry Carscallen
1485 W. Haven Road, San Marino
- Dr. Nathan E. Carl
4123 Edgehill Drive, Los Angeles 8
- Mr. and Mrs. Robert Casamajor
385 E. Green St., Pasadena
- Mr. and Mrs. Bernard J. Chausmer
10039 E. Edgewood Lane, Garden Grove
- Mr. and Mrs. Franz H. Christensen
544 S. Oak Knoll Ave., Pasadena 5
- Dr. and Mrs. John H. Clairmont
1818 Oak Knoll Rd., Glendale 8
- Mr. Harold F. Clark
944 Sonoma Way, Sacramento 19
- Mrs. Gladys M. Clemons
8914 Glendon Way, Rosemead
- Mrs. Katherine L. Coe
P. O. Box 62, Loomis
- Mr. Carl L. Cofer
P. O. Box 83, Yuba City
- Mr. and Mrs. Homer Gray Cole
5838 Hazelbrook Ave., Lakewood
- Mr. Frank E. Collier
909 Lyndon St., South Pasadena

Mrs. De Etta Cook
 1947 Midvale Ave., W. Los Angeles 25
 Elizabeth C. Councilman
 11549 E. Bryant Road, El Monte
 Mr. John N. Cramer
 1600 Milan Ave., South Pasadena
 Miss Frances L. Cramer
 921 W. 36th Place, Los Angeles 7
 Mr. and Mrs. S. K. Cree
 9081 E. Longden Ave., Temple City
 Miss Tyrene Crouch
 4615 Cemarron St., Los Angeles 62
 James A. Crowder
 408 E. 95th St., Los Angeles 3
 Mr. J. K. Crum
 10237 E. Beverly Blvd., Whittier
 Mr. H. L. Cutler
 9345 Bigby St., Downey
 Mr. W. G. Cuzner
 1540 Mirasol Dr., San Marino

 Mrs. Karl Day
 942 Pacific Ave., Alameda
 Mr. and Mrs. Wallace V. Day
 6909 Granger Ave., Bell Gardens
 Mr. Paul A. Dearborn
 644 Fairmont Ave., Glendale 3
 Mr. and Mrs. A. H. Dekker
 2524 E. Glenoaks, Glendale 6
 Mr. Paul Dennison
 1539 Maple St., Pasadena 4
 Descanso Distributors, Inc.
 Box 518, Chino
 Mr. R. F. Dickson
 Pres. Pacific Camellia Society, 1494 Casa
 Grande St., Pasadena 7
 Dr. and Mrs. Donald M. Dinsmoor
 330 W. Longden Ave., Arcadia
 Mr. and Mrs. Robert L. Dohrmann
 1425 S. Marengo Ave., Pasadena 3
 Mrs. Samuel M. P. Dolan
 1500 Bryant St., Palo Alto
 Toichi Domoto
 26591 Western Road, Hayward
 Mr. and Mrs. Hugh Dow
 45 N. Ham Lane, Lodi
 Mr. M. D. Dreifus
 1566 N. Crescent Heights Blvd., Holly-
 wood 46
 Mr. and Mrs. Harold E. Dryden
 820 Winston Ave., San Marino 9

 Pamela Edwards
 P. O. Box 2863, Hollywood 28
 Mr. and Mrs. Roy O. Elmore
 1101 E. Foothill Blvd., Altadena
 Mr. Frank E. Emme
 11630 E. Forest Grove St., El Monte
 Mr. and Mrs. Ray Albert Eppley
 205 S. Bushnell, Alhambra
 Cecil H. and Nadine Eshelman
 14287 Roblar Place, Sherman Oaks
 Dr. and Mrs. Daniel B. Easterly
 104 N. Madison Ave., Pasadena 1

 Mr. David L. Feathers
 1 Camellia Lane, Lafayette
 Mr. Joseph A. Fillipi
 1892 N. Marengo Ave., Pasadena 3
 Gerald Fisher
 830 Madre St., Pasadena 8
 Mr. and Mrs. Frank E. Ford
 2043 Edgewood Dr., South Pasadena
 W. W. Foss
 1985 Sycamore Drive, San Marino 9
 Mr. Winthrop E. Fowler
 1958 Harding Ave., Altadena
 Mr. Rufus Freitag
 1354 Garfield Ave., San Marino
 Mr. and Mrs. Paul Frey
 1101 Kempton Ave., Monterey Park
 Mrs. Chas. G. Frisbie
 1865 Campus Rd., Los Angeles 41
 Mr. J. D. Funk
 2012 La Mesa Drive, Santa Monica

 Mr. and Mrs. Maynard Gahan
 1306 Malgren, San Pedro
 Col. and Mrs. C. M. Gale
 40 N. San Rafael Ave., Pasadena 2
 Mrs. Anne Gally
 505 Bradford St., Pasadena 2
 Mr. and Mrs. P. E. Gallot, Jr.
 Rt. 2, Box 987, Marysville
 Mrs. Thomas K. Gally
 219 So. Wilson Ave., Pasadena 5
 Mr. Robert George
 3116 Louise St., Lynwood 2
 Mr. and Mrs. Roland J. Geimer
 628 E. Mountain View Ave., Glendora
 Mr. Ronald O. Gibbs
 2185 Sherwood Road, San Marino 9
 Charlotte E. Gilliland
 2636 El Caminito, La Crescenta
 Mr. and Mrs. Merle S. Gish
 1845 Pennsylvania Ave., Riverside
 Dr. Ralph G. Gladden
 1115 13th St., Modesto
 Mr. W. M. Glassell
 2018 Monticito Drive, Glendale 8
 Mr. and Mrs. W. F. Goertz
 1835 Carlisle Drive, San Marino 9
 Mr. G. R. Gorton
 808 N. Spring St., Los Angeles, c/o L. A.
 Co. Agricultural Commission
 Mr. and Mrs. P. J. Grosso
 14962 E. Holt Ave., Baldwin Park
 Lala L. Grube
 8932 Arcadia Ave., San Gabriel
 Miss Loree Guhl
 11421 E. See Drive, Whittier
 Mr. Harvey L. Gunn
 1081 E. Grand Ave., Pomona

 Ned O. Hair
 133 No. Rose St., Burbank
 Camellia Hall
 4950 44th St., Sacramento
 Mrs. Raymond B. Hansen
 Box 577, La Habra

- Dr. O. H. and Mrs. Zora Hanson
541 N. San Marino Ave., San Gabriel
- Dan and Helen Hanson
541 N. San Marino Ave., San Gabriel
- Judge Sherrill Halbert
Box 1047, Sacramento
- Mr. and Mrs. Lester F. Harrell
3613 N. Baldwin Park Blvd., Baldwin Park
- Mr. and Mrs. John M. Harris
2063 Mt. View, San Bernardino
- Mr. Leslie R. Harris
549 S. Figueroa St., Los Angeles 17
- Mrs. Sidney Harris, Secy. Pacific Camellia Society, 3871 Franklin Ave., Los Angeles 27
- Alpha M. and Dian M. Hartman
13233 Wheeler Ave., San Fernando
- Hathaway Nursery
Rt. 1, Box 192, Visalia
- Mr. D. A. Hawn
4710 Daleridge Road, La Canada
- Mr. and Mrs. Clarence S. Hearn
2021 Santa Anita Ave., Arcadia
- Mr. and Mrs. George Hedrick
423 Hill Ave., Watsonville
- Mr. George J. Helms
445 Beverly Ave., San Leandro
- Mrs. Jewel Henning
1114 Harmony Drive, Hayward
- Mr. Harry Hern
4409 Ocean View, Montrose
- Mr. and Mrs. Robert E. Herndon
4120 Motor Ave., Culver City
- Mr. and Mrs. Charles R. Herr
1776 Orangewood St., Pasadena 4
- Mr. William Hertrich
1151 Oxford Road, San Marino 9
- Miss Jo Ann Hewitt
Sunset Magazine, 3440 Wilshire Blvd., Los Angeles 5
- Mr. and Mrs. Harold C. Hill
2659 Buenos Aires Drive, Covina
- Miss Charlotte Hoak, Editor, Golden Gardens, 1125 Stratford Ave., South Pasadena
- Mr. J. Roy Holland
1005 N. Olive Ave., Alhambra
- Dr. Clifton B. Homan
301 U. S. National Bank Bldg., Monrovia
- Mr. G. Wyman Hope
Pres. Pasadena Flower Show Assn., 732 S. Euclid Ave., Pasadena 5
- Mr. Paul J. Howard
11700 National Blvd., Los Angeles 34
- Dr. E. C. Hubbs, Sr.
1370 San Luis Rey Drive, Glendale 8
- Mr. and Mrs. Luis Huelcano
455 N. Del Mar Ave., San Gabriel
- Mr. Robert B. Hughes
201-A No. Alhambra, Monterey Park
- Huntington Botanical Gardens
Oxford Road, San Marino 9
- Mr. and Mrs. Milton M. Inman
1698 Corson St., Pasadena 4
- Jack's Garden Service
Rt. 1, Box 602, Ripon
- Mr. and Mrs. A. Alan Jackson
17554 Nordhoff St., Northridge
- Col. and Mrs. Thomas M. Jervey
285 Palmetto Drive, Pasadena 2
- Mrs. Clifton W. Johnson
1866 Twin Palms Dr., San Marino 9
- Mr. David W. Johnson
1301 Stratford, South Pasadena
- Mr. Arthur A. Jones
117 E. Linda Vista Ave., Alhambra
- Mrs. Lena T. Jones
8105 S. College Ave., Whittier
- Mr. Stanford Jones
2644 Montrose Ave., Montrose
- Haroldine B. Juster
12049 E. Magnolia St., El Monte
- Mr. and Mrs. August F. Kapp
4201 Oak Grove Drive, Pasadena 2
- Mr. and Mrs. Joseph N. Kapp
920 Athens St., Altadena
- Mr. and Mrs. Alexander H. Keith
705 E. Cypress St., Glendale 5
- Mr. and Mrs. David W. Kelley, Jr.
Box 3071 Glenoaks Station, Burbank
- Mr. and Mrs. George W. Kendall
3910 West 6th St., Los Angeles 5
- Mr. George N. Keystone
155 Sansome St., San Francisco 4
- Mrs. Lydia S. King
712 No. Oakhurst Dr., Beverly Hills
- Mr. and Mrs. Victor H. King
710 Pinehurst Drive, Pasadena 5
- Mr. Judson K. Kirby
Secy. Northern Calif. Camellia Society, 7 Elliott Dr., Route 1, Concord
- Mr. Paul F. Koehl
1055 Old Mill Road, San Marino 9
- Dr. Martha Kohl
1003 S. Baldwin Ave., Arcadia
- Mr. John C. Kohnen
1475 Mirasol Dr., San Marino
- Mrs. E. L. Korts
3628 Revere Ave., Los Angeles 26
- Mr. and Mrs. Louis Kryger
581 No. Orange Grove, Pasadena 3
- Mr. and Mrs. Don F. Kuhn
2312 Oliveras Ave., Altadena
- Mrs. Kathryn A. Kuykendall
1117 E. Foothill Blvd., Altadena
- Mr. and Mrs. W. J. La Franz
2541 Tulare St., Richmond 9
- John F. and Mabel Lamb
400 W. Foothill Blvd., Arcadia
- Dr. and Mrs. Walter E. Lammerts
Box 253, Livermore
- C. W. Lattin
2246 83rd Ave., Oakland 5
- Dr. and Mrs. John D. Lawson
2920 Capitol Ave., Sacramento 9

Mrs. Marjorie S. Leach
 19700 Parthenia St., Northridge
 Mr. J. C. Lafeburo
 10318 Bowman, South Gate
 Carl R. and Ruby F. Lennig
 1871 Locust St., Pasadena 8
 Mr. Ashley M. Levy
 923 So. Irolo, Los Angeles
 J. J. Littlefield
 766 N. Mentor Ave., Pasadena 6
 Gordon Baker Lloyd
 8618 Las Tunas, San Gabriel
 Mr. John R. Lodge
 2320 Lincoln Ave., Altadena
 Mr. Frank B. Lombard
 531 W. Camino Real, Arcadia
 Los Angeles State and County Arboretum
 Arcadia
 Mr. Stanly Lotz
 215 West 7th St., Room 320, Los Angeles
 14
 Mr. and Mrs. O. G. Lowman
 1433 South 2nd Ave., Arcadia

 Mr. and Mrs. M. Leslie Marshall
 6742 No. Sultana Ave., San Gabriel
 Mr. and Mrs. George B. Marx
 269 Prospect Ave., Long Beach 3
 Bruce and Kathleen Mason
 1020 Security Bldg., Long Beach 2
 Marcia Masters
 Editor, Home Magazine, Los Angeles
 Times, Los Angeles
 Mr. Chester H. Mau
 5414 N. Hilton Ave., Temple City
 Mr. William H. McAndrews
 285 Poinsettia Ave., Monrovia
 Mr. and Mrs. Vern O. McCaskill
 25 S. Michillinda Ave., E. Pasadena 10
 Mr. Lowry B. McCaslin
 4110 Woodleigh Lane, Pasadena 3
 Mrs. J. H. McClellan
 140 N. Ashdale Ave., Los Angeles 49
 Mr. J. W. McCluskey
 2394 Sherwood Road, San Marino 9
 Mr. and Mrs. John M. McCollum
 1471 Cambridge Road, San Marino 9
 Mr. R. L. McCollum
 18060 Parthenia St., Northridge
 Mr. and Mrs. James D. McCullough
 1000 Chataqua Blvd., Pacific Palisades
 Perry McIntyre
 13436 Reliance St., Pacoima
 Mrs. D. W. McLean
 2508 S. Santa Anita Ave., Arcadia
 Mr. James A. McMorris
 1116 Glendon Court, South Pasadena
 Mr. W. M. McNevin
 1541 S. Lafayette St., San Gabriel
 Edwards H. and Jane K. Metcalf
 745 Canterbury Road, San Marino 9
 Mr. and Mrs. D. E. Miller
 6212 San Gabriel Blvd., San Gabriel
 Mirandy
 1850 Mandeville Canyon Road, West Los
 Angeles

 Mrs. H. E. Milliken
 454 Palm Dr., Covina
 Monrovia Nursery Co.
 Monrovia
 Mr. and Mrs. Donald W. Moorhusen
 8413 E. Duarte Road, San Gabriel
 Mr. and Mrs. Peter Morat
 8110 E. 3rd St., Downey
 Mrs. Phoebe Morehead
 Orange Cove
 Mr. Ken Morioka
 1543 18th St., Santa Monica
 Dr. and Mrs. John Morrison, Jr.
 7822 E. 6th St., Downey
 Mr. Thomas B. Mote
 2069 Pine St., Redding
 Mr. Elmer Mueller
 P. O. Box 164, Etiwanda
 Mr. Calvin H. Mullen
 Pres. Los Angeles Camellia Society
 2928 N. Beechwood Dr., Los Angeles 28
 Mr. and Mrs. J. J. Mulvihill
 889 North Foothill Blvd., Pasadena 8
 Mr. Francis Murphy
 1280 E. North St., Anaheim
 Anna M. Murray
 Rt. 1, Box 770, Modesto

 Dr. and Mrs. Earl F. Nation
 2235 N. Villa Heights Road, Pasadena 8
 Mr. Glyn A. Neff
 3745 Corto Calle, Pasadena 8
 Mr. and Mrs. Eugene R. Nelson
 2051 W. Monterey, Stockton
 Mr. and Mrs. Manuel Nevis
 41 West Las Flores Drive, Altadena
 Mr. and Mrs. L. P. Newcomb
 1749 Arrowhead Ave., San Bernardino
 Mr. Robert E. Nicholls
 Box 327, Soledad
 Mr. and Mrs. Howard Nichols
 1730 Crestmont Dr., Bakersfield
 Dr. Walter E. Nichols
 605 Westbourne, La Jolla
 George D. Nickel
 1300 Romona Rd., Arcadia
 Mr. and Mrs. Jack I. Notrica
 9033 Wilshire Blvd., Beverly Hills
 Mr. Harry Novick
 9022 Alcott St., Los Angeles 35
 Mrs. Pauline M. Novak
 285 S. Grand Oaks Ave., Pasadena 10
 Mr. and Mrs. Julius Nuccio
 3346 Canyon Crest Rd., Altadena

 Mr. and Mrs. Floyd O'Connor
 7518 Etiwanda St., Reseda
 Mr. Harry H. Oka
 608 S. Date Ave., Alhambra
 Mr. Grant H. Olaine
 3186 Bryant St., Palo Alto
 Mr. Jerry Olrich
 Room 215, State Capitol, Sacramento
 Charles H. and Clara Pearl Oneal
 1637½ Huntington Dr., S. Pasadena

- Mrs. George E. Orme
Box 578, Hemet
- Mr. and Mrs. Chesley Osborn
3200 Edgecliff Lane, Pasadena 8
- Mr. and Mrs. John R. O'Steen
279 W. Tujunga Ave., Burbank
- Mr. Harold L. Paige
1212 Monticello Rd., Lafayette
- Mr. Leo Parachini
118 Sycamore Ave., San Anselmo
- Mr. and Mrs. Alton B. Parker
6121 N. Rosemead Blvd., Temple City
- Frank A. and Viola Parks
860 Madre St., Pasadena 10
- Dept. of Parks, Descanso Gardens
1418 Descanso Dr., La Canada
- Pasadena Chamber of Commerce
181 S. Los Robles Ave., Pasadena 5
- Pasadena Public Library
Pasadena 1, Calif.
- Dr. Seibert Pearson
5350 El Prado Ave., Long Beach 15
- Mr. Ted Pedder
2044 Mendocino Lane, Altadena
- Mr. Ralph S. Peer
8159 Hollywood Blvd., Los Angeles 46
- Mr. and Mrs. Eric C. Pepys
555 Santa Anita Ave., San Marino 9
- Mr. and Mrs. Charles D. Perlee
2788 St. James Place, Altadena
- Mr. and Mrs. James A. Perry
8941 E. Duarte Rd., East San Gabriel
- Mr. and Mrs. Charles O. Petersen
5529 Ventura Canyon Ave., Van Nuys
- Mr. and Mrs. C. A. Peterson
8104 E. Stewart and Gray Rd., Downey
- Mr. W. H. Pike
3630 Frances Ave., Los Angeles 66
- Mr. C. W. Pitkin
2465 Sherwood Rd., San Marino 9
- Dr. and Mrs. John E. Pomfret
1650 Orlando Rd., San Marino 9
- Mrs. R. B. Potter
1906 Escarpa Dr., Los Angeles 41
- Mr. R. W. Proudft
3664 Fairland Blvd., Los Angeles 43
- Mrs. Rosaline Pura
Box 34, Gonzales
- Mr. and Mrs. R. W. Ragland
555 S. Flower St., Los Angeles 17
- Mr. and Mrs. George Raver
3255 4th St., Riverside
- Albert E. and Leona P. Rebol
2022 N. Craig Ave., Altadena
- Myron D. and Ruth V. Reeves
610 N. Reese Place, Burbank
- Mr. and Mrs. Edward C. Renwick
834 Winston Ave., San Marino
- Victoria Reynolds
4315 N. Vincent St., Covina
- Mr. and Mrs. M. L. Rhodes
247 Roberts St., Pasadena 6
- Mr. Alvin Richards
10988 Kodota Ave., Pomona
- Mr. and Mrs. W. L. Rifenberick
1715 Ben Lomond Dr., Glendale 2
- Mr. Roger E. Rodecap
9229 Samoline Ave., Downey
- Mr. Tony S. Roderick
307 E. Tunnel, Santa Maria
- Mr. Richard F. Roggia
682 N. 15th St., San Jose
- H. W. Rothman
336 Adair St., Long Beach 5
- Mr. and Mrs. Horace W. Rupp
920 Canon Rd., Santa Barbara
- Mr. and Mrs. Martin Ruster
394 Bonita Ave., Pasadena 10
- Mrs. Ruth S. Ryan
1260 N. El Molino Ave., Pasadena 6
- Mrs. A. H. Sanborn
Rt. 4, Box 371, Chico
- Mr. Homer E. Sargent
222 Arroyo Terrace, Pasadena 3
- Mr. Robert O. Schad
Henry E. Huntington Library, San Ma-
rino 15
- Edna and Al H. Schoof
1218 S. 2nd Ave., Arcadia
- Henry C. Schumacher
1039 E. San Joaquin St., Tulare
- Mr. and Mrs. Otto Schwill
2301 Pacific Ave., Stockton
- Mr. and Mrs. Walter T. Scott
1809 N. Maringo Ave., Pasadena 3
- Dr. Gertrude C. Seabolt
803 Grand Ave., S. Pasadena
- Dr. Pettus G. Secrest
5231 Los Flores St., Long Beach 15
- Mr. and Mrs. Paul E. Shepp
3944 Mountain View, Pasadena 8
- Mr. and Mrs. K. Mac Shintaku
130 N. Alma Ave., Los Angeles 63
- Dr. Herbert Shirley
136 N. Valley St., Burbank
- Clyde C. Shoemaker
117 W. 9th St., Los Angeles 15
- Mr. and Mrs. Harvey F. Short
781 N. Foothill Blvd., Pasadena 6
- Dr. Ida M. Shrode
386 S. Meridith Ave., Pasadena 5
- Mrs. Louis Shropshire
1217 N. Lamer St., Burbank
- Mr. and Mrs. Raymond Sible
808 Bonita St., Monrovia
- Mrs. Joseph A. Silver
Box 334, Dos Palos
- Mr. and Mrs. Norman F. Simmonds
1320 Garfield Ave., San Marino
- Mr. Gordon Simpson
561 Bradford St., Pasadena 2
- Mr. Gordon B. Simpson
1415 Hamilton Ave., San Jose
- Mr. Fred I. Sinclair
822 E. Mountain St., Pasadena 6
- Mr. and Mrs. Edgar I. Sinnott
985 Stoneridge, Pasadena 2
- W. M. Sisson
6531 Homewood Ave., Hollywood 28

Mr. and Mrs. Burton C. Smith
 724 Plymouth Rd., San Marino
 Mr. Chester L. Smith
 2650 Elm Ave., Long Beach 6
 Mr. Lee Smith
 2193 N. Holliston Ave., Altadena
 Mr. Kenneth M. Smoyer
 511 E. Aliso St., Los Angeles 12
 Mr. Joseph C. Soldavini
 531 C St., San Rafael
 Mr. and Mrs. L. J. Soracco
 990 Hampton Rd., Arcadia
 South Pasadena Library
 South Pasadena
 Miss Helen Speck
 241 Arbolada Dr., Arcadia
 Mr. Walter A. Speth
 2570 N. Brighton St., Burbank
 Mrs. Leslie A. Stephens
 1919 Tollis Ave., Santa Barbara
 Mr. John H. Stevens
 4640 Cover St., Riverside
 Mrs. Chas. C. Stewart
 2332 Cloverfield Blvd., Santa Monica
 Eunice R. Stout
 1247 Adair St., San Marino 9
 Mariko T. Sumida
 1138 Murras Ave., Monterey
 Dr. A. W. Sutherland
 162 Oxford, Lindsay
 Mrs. R. G. Stapleton
 1681 Bird St., Oroville
 Mr. W. L. Stoeckle
 Box 818, Concord
 Mr. Frank L. Stormont
 1620 San Remo Dr., Pacific Palisades
 Mr. and Mrs. Andrew Surina
 4808 Kester Ave., Sherman Oaks
 Carl A. Swanson
 1890 E. Orange Grove Ave., Pasadena 7
 Mr. K. T. Kahashi
 3129 Barney Ave., Menlo Park

 Mr. George C. Tauhman
 3666 Steainlee Ave., Long Beach 8
 Dr. and Mrs. L. J. Taylor
 810 Highland Dr., Pasadena 2
 Mr. W. U. Temple
 81 Paseo Hermoso, Salinas
 Temple City Library
 5938 N. Kauffman, Temple City
 Mr. and Mrs. Robert F. Thayer
 6632 Denny Ave., North Hollywood
 Edythe Thomas
 7011 Templeton St., Huntington Park
 Mr. and Mrs. A. C. Thompson
 4633 N. Ivar Ave., Rosemead
 Mr. Roy T. Thompson
 2723 Hermosita Dr., Glendale 8
 Mrs. Hilda Thorsk
 1897 Locust St., Pasadena 8
 Mr. Elber H. Tilson
 1959 Noel Place, Beverly Hills
 Mrs. Alice C. Tinkham
 135 S. Bowling Green Way, Los Angeles 49

 Paul A. Topham
 4360 Bel Air Dr., La Canada
 Mr. and Mrs. E. C. Tourje
 510 N. Del Mar Ave., San Gabriel
 Mrs. Nelle H. Toyne
 292 S. Santa Anita Ave., Pasadena 10
 Mrs. Harry A. Truman
 860 Rio St., Red Bluff
 Tuttle Bros., Nursery
 729 Atlantic St., Altadena
 Victor and Ella Tuttle
 414 S. Arroyo Blvd., Pasadena 2
 Twin Cypress Nurseries
 743 E. Base Line, San Bernardino

 Mrs. Elmer F. Ulrich
 126 N. Rockingham, Los Angeles 49
 John and Anna Uzdavinys
 3604 E. 60th Place, Huntington Park

 A. Vasquez
 1155 S. Soto St., Los Angeles 23
 Mr. H. F. Vedder
 980 Scenic Dr., San Bernardino
 Mrs. Wm. Viney
 420 Palm Dr., Covina

 John Wallner
 1703 N. Fair Oaks Ave., Pasadena 3
 Beulah Walls
 407 N. Hidalgo Ave., Alhambra
 Dr. Le Roy Eugene Walter
 1418 Hillcrest Dr., Glendale 2
 Mr. and Mrs. O. Ed Warburg
 2335 Longden Dr., San Marino
 Mr. and Mrs. Robert A. Ward
 4947 Hartwick St., Los Angeles 41
 Mr. and Mrs. Donald F. Warren
 4218 Shepherds Lane, La Canada
 Mr. Claude A. Wayne
 759 Nimes Rd., Los Angeles 24
 Col. and Mrs. Walter D. Webb, Jr.
 905 N. Bushnell Ave., Alhambra
 Estafania and Jack Webster
 1788 Pepper Dr., Altadena
 Frank F. and Lorraine A. Wedekind
 Rt. 2, Box 261, Sonoma
 Miss Evelyn West
 111 N. Hill Ave., Pasadena 4
 Mr. and Mrs. William M. West
 4034 N. Lyman St., Covina
 Mr. and Mrs. O. H. Wetherby
 815 E. Valley Blvd., San Gabriel
 Mr. George E. Widmann
 8544 E. Larkdale Rd., San Gabriel
 Mr. Roy W. Wiegand
 308 26th St., Sacramento
 Mr. Roy F. Wilcox
 Montebello
 Mr. and Mrs. David Will
 4906 Alta Canyon Rd., La Canada
 Edith W. Williams
 Rt. 5, Box 494, Visalia
 Dr. and Mrs. Louis A. Williams
 1356 Irving Ave., Glendale 1
 Marshall Williams
 503 Chatsworth Dr., San Fernando

Mr. and Mrs. Clarence A. Winder
740 Linda Vista Ave., Pasadena 2
Earl A. and Ruth S. Winther
1644 Silver Oak Terrace, Los Angeles 41
Dr. Everett J. Witt
6900 Foothill Blvd., Tujunga
Mr. and Mrs. R. S. Woglum
705 Arden Rd., Pasadena
Mr. William E. Woodroof
4117 Davana Terrace, Sherman Oaks
Mr. and Mrs. Elbert N. Woodruff
222 Glen Summer Rd., Pasadena 2
Mr. Fred L. Wright
1680 N. Fair Oaks Ave., Pasadena 3
Mrs. Janet Wright
Box 124, San Marino
Mr. William E. Wylam
1041 N. Hudson Ave., Pasadena 6

Mr. Michael Yavenditti
5247 Brookdale Rd., South Gate
Mr. Hayao. Yoshimura
632 S. San Gabriel
Mr. and Mrs. Harold Young
6210 Pine Ave., Bell
Mr. and Mrs. R. L. Young
1231 Valencia Ave., San Bernardino
Mr. and Mrs. J. H. Youngken
2700 Winthrop Ave., Arcadia
Mr. J. E. Youtz, Jr.
2530 Deodar Circle, Pasadena 8

Mr. Joseph A. Zorraquinos
4438 N. Earle, Rosemead

ALABAMA

Mr. J. Lloyd Abbot
Rt. 2, Box 182, Mobile
Mrs. R. T. Ashurst, Jr.
4038 Wares Ferry Rd., Montgomery
Mrs. Letcher G. Bailey
175 Pineview Lane, Spring Hill
Mr. Charles H. Barrios
Semmes
Ellie J. Barrow
211 Stanley St., Andalusia
Dr. H. S. Bartlett
836 Park Ave., Montgomery 6
Mrs. J. B. Benton
Rt. 3, Box 154, Crichton Sta., Mobile
J.V. Blackwell
306 Devon Dr., Birmingham 9
Mr. Charles R. Butler
2150 Pld Shell Rd., Mobile
Mark S. Cannon
300 Montezuma Ave., Dothan
Mr. Carl Crantham
1410 Roseland Dr., Birmingham 9
Mr. O. H. Delchamps
2557 S. Delwood Dr., Mobile
Dr. H. B. Dowling
803 Gout St., Mobile 18

Miss Mary I. Drummond
Box 953, Mobile 5
Mr. Robert D. Eiland
1981 Speigle St., Montgomery 7

Mr. J. C. Fain
Perry Hill Rd., Montgomery
Dr. Gilbert E. Fisher
501 Medical Arts Bldg., Birmingham 5
Mrs. M. J. Funchess
Box 442, Auburn

Dr. A. D. Hagan
3628 Country Club Rd., Birmingham
Mr. Elbert A. Hamilton
1412 Avon Circle, Birmingham
Mr. Cliff Harris
1070 Government St., Mobile
Mr. and Mrs. J. Marvin Haynie
Rt. 1, Box 240-C, Mobile Co., Theodore
Harold M. Henderson
3451 Cliff Rd., Birmingham 5
Mr. J. F. Hendon
1631 N. 3rd Ave., Birmingham

Mr. and Mrs. Everett E. Jackson, III
15 Pecan Ave., Fairhope

Mr. R. L. Lange
3505 Salisbury Rd., Birmingham
Dr. S. G. Latiolais
1001 W. Main St., Dothan
Mr. Norman Lefkovits
2126 Claredon Ave., Bessemer
Mr. John W. Lill, Jr.
1900 W. North St., Dothan
Dr. B. G. Linder
3111 Sterling Rd., Birmingham

Mr. E. D. Mercer
304 Gaines Ave., Spring Hill

Mr. Harry E. Nation
Box 73, Montgomery 1
Mr. J. H. Norton
1539 Gilmer, Montgomery

Mr. Henry P. Orr
Rt. 4, Box 44, Opelika

Mr. J. F. Pate
Box 375, Mobile
James G. Pearce
225 N. Center St., Birmingham 4
Rev. Frank S. Persons, II
Box 1031, Opelika
Mrs. E. J. Pfingstl
Box 1870, Montgomery

W. Lee Poe
2540 Aberdeen Rd., Birmingham
Mr. B. P. Poyner, Jr.
Box 826, Dothan

Mr. W. J. Reynolds, Jr.
Box 283, 1112 Dallas Ave., Selma

Mr. K. Sawada
Overlook Nurseries, Inc., Crichton Sta.,
Mobile

FLORIDA

Mr. Robert J. Scott
 Rt. 1, Box 15, Grand Bay
 Mr. and Mrs. E. A. Shelnett
 22 W. Rosemary Rd., Montgomery
 Mr. Ogden Shropshire
 1905 Spring Hill Ave., Mobile
 Mr. J. W. Sledge
 4316 Overlook Rd., South Birmingham 5
 Mr. and Mrs. C. F. Smith
 922 S. Lawrence St., Montgomery 6
 Mr. Tyson L. Smith
 Box 384, Eufaula
 Mr. J. H. Stacey
 Box 420, Bay Minette
 H. W. Steindorff
 Greenville
 Mr. W. C. Strain
 Battles Wharf
 Dr. and Mrs. J. Leslie Taylor
 Les Tay Home, RFD Box 233, Theodore
 Mr. M. D. Taylor
 1024 3-Notch Ct., Andalusia
 Dr. Lee F. Turlington
 1922 10th Ave., Birmingham 5
 Mr. George M. Wheeler
 3839 Glencoe Dr., Birmingham 9
 Mrs. E. A. Wiggins
 Rt. 3, Box 98, Crichton Sta., Mobile
 Mr. Thomas A. Williams
 1028 Whitney Bldg., New Orleans
 Mr. H. L. Windbigler
 Azalea Glen Nurseries, Loxley
 Mrs. Gurtrud Young
 Silver Bay Nurseries, Daphne

ARIZONA

Mary Turner Lyons
 1948 E. 7th St., Tucson
 Mrs. Walter J. Wakefield
 4 Paseo Redondo, Tucson

COLORADO

Mr. George J. Kindel
 1444 Steele St., Denver 6

CONNECTICUT

Mr. Gerald Whitman
 Vineyard Lane, Greenwich
 Mr. Frederick G. Whitman
 12 Rocaton Rd., Darien

DISTRICT OF COLUMBIA

Library
 U.S. Dept. of Agriculture, Washington 25
 Comdr. W. S. Domer
 3600 Idaho Ave., N.W., Washington 16
 Col. and Mrs. L. E. Edwards
 3737 Chesapeake St., N.W., Washington
 16

American Camellia Society
 Box 2398 Univ. Sta., Gainesville

Dr. J. H. Belyeu
 141 W. 44th St., Jacksonville
 Mr. C. R. Bostick
 Box 596, Wauchula
 Mr. Edwin C. Brown
 5911 110th St., Jacksonville

Dr. Joseph Canipelli
 4468 Oretaga Forest Dr., Jacksonville 10
 O. M. Christensen
 4345 Baltic St., Jacksonville 10

M. B. Dawson
 Box 924, Pensacola

Mr. Jay W. Ellis
 4607 Algonquin Ave., Jacksonville 10

Mr. J. K. Galloway
 Box 256, Winter Park
 Gerbing Camellia Nursery
 Fernandina

Mr. W. G. Goodwin
 Box 152, Lake City

Dr. H. Harold Hume
 1205 W. Masonic St., Gainesville

Mr. Leland J. Lewis
 565 Oakland Ave., Tallahassee
 Mr. Robert E. Littrell
 2100 3rd Ave., S., St. Petersburg

Mrs. Roger L. Main
 1524 Barnett Bk. Bldg., Jacksonville 2
 Mr. Charles E. Moorman
 1149 Moorviewwood Rd., Jacksonville 7

Mr. Henry J. Nelson
 1518 May St., Jacksonville 4
 Mr. Glen S. Norman
 1840 Oak Lane, Lake Sue Park, Orlando

Mrs. A. Z. Olliff
 Box 415, Wauchula
 Mr. E. T. Owens
 Park Lane Apts., Jacksonville

H. C. Petteway
 Box 947, Lakeland

Neill Rhodes
 Box 779, Jacksonville 1

Mr. John N. Sewell
 1420 Edgewood Ave., Jacksonville 5
 Mr. and Mrs. M. L. Shea
 1533 N.W. 5th Ave., Gainesville
 Mr. A. M. Stowe
 Box 9, Pensacola

Mr. C. W. Taylor
 907 E. Hamilton Ave., Tampa 4
 L. A. and Jessie M. Van Dusen
 1407 Glengarry Rd., Jacksonville 7
 Mr. D. L. Wilson, Jr.
 Box 4878, Jacksonville

Dr. Claude B. Wright
337 22nd Ave., N. St. Petersburg
Mr. Victor B. Yeats
Stovall Prof. Bldg., Tampa
Mr. Jim Young
116 Palmera Blvd., St. Petersburg

GEORGIA

Mr. V. J. Adams
614 Persons Bldg., Macon
Mr. John H. Baker
RFD #6, Isle of Hope, Savannah
Mr. and Mrs. Jack Barrett
3 E. 50th St., Savannah
Mrs. Carter Burdell
1000 Milledge Rd., Augusta
Mrs. F. P. Calhoun
2906 Andrews Dr., Atlanta
Mr. H. C. Cates
340 E. 50th St., Savannah
Central Georgia Nurseries
Clinto Rd., U.S. 129, Macon
Dr. Howard Cheshire
407 Park Ave., Thomasville
Mr. Boynton Cole
1843 Flagler Ave., N.E., Atlanta
Mr. F. C. Coleman
323¹/₂ W. Walker Ave., College Park
Mrs. Ben Cone
Thunderbolt
Mr. Charles M. Cork
146 Buford Place, Macon
Mr. George D. Counts
711 E. 54th St., Savannah
Mr. T. A. Crusselle
501 Federal Terrace, S.E., Atlanta
Mr. Charley G. Drake
Roosevelt Highway, Union City
Mr. J. R. Dunn
1640 W. Wesley Rd., N.W., Atlanta
Mr. A. C. Durden
304 Pierce Ave., Macon
Mr. P. K. Early, Jr.
1125 Brentwood Ave., Macon
Comdr. R. P. Erdman
Sparkleberry Hall, Wilmington Island,
Savannah
Evergreen Nurseries
Perry
Mr. and Mrs. C. W. Farmer
1158 Oak Cliff Rd., Macon
Albert Fendig
St. Simon Island
Mr. W. G. Gilmore
563 Collier Rd., N.W., Atlanta
Mr. Lee M. Happ
Broadway and Pine, Macon
Dr. P. L. Hilsman
1001 3rd St., Albany
Mr. H. M. Hubbard
2389 Hurst Dr., N.E., Atlanta
Mr. Leo Huckabee
3395 Osborne Place, Macon
Mr. Ralph H. Hughes
1010 N. Ridge Ave., Tifton
Mr. J. P. Ilges
Box 103, Columbus
Mr. William B. Jones
814 Milledge Rd., Augusta
Mr. Herbert Kahrs
16 4th St., Augusta
Mr. and Mrs. J. B. Kilbridge
2255 S. Woodward Way, N.W., Atlanta
Dr. Stephen J. Lange
11 Oleander Ave., Savannah
Mr. L. L. Lannae
604 Robert Toomba Ave., Washington
Mr. F. P. Lindsey
672 S. 6th St., Griffin
Mr. and Mrs. Roy W. Lovelace
915 Lee St., Thomson
L. L. McCleskey, Jr.
1217 Elm Ave., Americus
Mrs. W. Z. McDonald
3 E. 48th and A Sts., Savannah
Mr. George A. Mercer, Jr.
Box 1007, Savannah
Dr. W. G. Lee
1st Natl. Bk. & Trust Co., Macon
Mr. J. T. McDowell
309 S. Davis St., Nashville
Mr. Troy W. Millikan
542 E. 56th St., Savannah
Mr. Henry Mura
3033 Wrightsboro Rd., Augusta
C. W. Oakes
492 Flat Shoals, S.E., Atlanta
Mr. Stephen Pace
Macon Rd., Americus
Mr. E. F. Pearce
339 Beverly Rd., N.E., Atlanta
Mr. Broughton Powell
Boston Rd., Thomasville
Mr. Joseph H. Pylon
Reynolds
Mrs. Sam D. Register
Box 704, Valdosta
Mr. Monte O. Rentz
458 Boulevard Dr., Decatur
Mrs. H. S. Roberts
1550 16th Ave., Columbus
Mrs. J. M. Scruggs
Box 386, Nashville
Dr. and Mrs. Harold Smith
4 Henry Ave., Savannah
Mrs. Jim Smith
Box 201, Bowdon
Dr. Richard L. Smith
Box 127, Cochran
Arthur W. Solomon
Grimbell's Point, Savannah

Mr. Frank M. Spratlin
 2943 Habersham Rd., N.W., Atlanta
 Lucile and Wylie Stalter
 Box 421, Savannah
 Mr. David C. Strother
 Fort Valley
 Dr. Raymond Suarez
 844 Parkview Dr., Macon
 Mr. W. P. Sullivan
 985 Boulevard, N.H., Macon
 Mr. and Mrs. Marvin T. Swann
 520 Parkway Dr., N.E., Atlanta 5
 Mr. and Mrs. Joe Thomas
 3856 The Prado, Ingleside, Macon
 Dr. O. R. Thompson
 212 Pio Nona Ave., Macon
 Mrs. J. T. Warren
 124 Taylor St., Americus
 Mr. Ed L. Wight
 44 Wakefield Dr., N.W., Atlanta
 W. Lewis Wilson
 Box 889, Thomasville
 Dr. M. B. Wine
 917 S. Broad St., Thomasville
 Mr. M. J. Witman
 Lorraine Farms, Rt. 1, Macon
 Mr. and Mrs. William T. Wood
 240 2nd St., Macon
 Mr. W. H. Young, Jr.
 Columbus

ILLINOIS

Mr. J. Greblinnas
 2315 W. 103rd St., Chicago 43
 Mrs. Mathon Kyritsis
 6 Clayton St., Waukegan
 Dr. W. H. Schowengerdt
 1216 W. Healey St., Champaign
 Mr. John W. Shakespeare
 541 S. Pine St., Centralia
 Mr. Edward L. Vollers
 681 Lincoln Ave., Winnetka

LOUISIANA

Miss Hazel Autrey
 Box 1325, Shreveport
 Mr. Jesse L. Aydeff
 1604 Seneca St., Baton Rouge
 Mr. M. C. Baldrige
 813 Haring Rd., New Orleans 20
 Mr. G. P. Bartels
 2719 Fern St., New Orleans 18
 Mr. Louis R. Begnaud
 1013 9th St., Lafayette
 Mr. Clyde M. Bostick, Jr.
 922 Williams Ave., Natchitoches
 Mr. N. C. Bravings
 4428 N. Fairway Dr., Shreveport
 Mr. and Mrs. J. M. Bread
 300 K St., Monroe

Mr. and Mrs. F. C. Brinkmann, Jr.
 856 Wilkinson St., Shreveport
 Dr. Joseph J. Ciolino
 4486 St. Roch Ave., New Orleans 22
 Mr. Neal J. Dautel
 1402 17th St., Lake Charles
 Mr. and Mrs. Clarence Ford
 1135 Richmond Circle, Shreveport
 Mr. and Mrs. E. J. Fuhr
 3336 Magazine St., New Orleans
 Mr. Harry Glover
 521 Atkins St., Shreveport
 Mr. N. J. Griffith
 1332 Anniston Ave., Shreveport
 Guillot Camellia Gardens
 8138 Palm St., New Orleans
 Dr. A. Scott Hamilton
 419 Catalpa St., Monroe
 Mr. Albert J. Isacks
 Southdown Plantation, Houma
 Mr. and Mrs. Mayer Israel
 Folsom Rd., Covington
 Mr. and Mrs. James T. Jeter
 810 Audubon Place, Shreveport
 Dr. Alvin E. Johnson, Jr.
 3130 Elysian Fields Ave., New Orleans 22
 T. A. Johnson
 3000 Amelia St., Shreveport
 Mr. and Mrs. Sigmund J. Katz
 Box 896, Covington
 Mrs. T. B. Lanford
 6602 Gilbert, Shreveport
 Mr. Robert C. Learson
 210 Lewisville St., Minden
 Eileen Magee
 905 Louiseana Ave., Bogalusa
 Roy L. Mayhew
 Box 8482 University Sta., Baton Rouge 3
 Mrs. John F. McCormick
 5870 Marshal Foch Dr., New Orleans 24
 Mr. H. D. McNamara
 1463 Henry Clay Ave., New Orleans
 Men's Camellia Club of Shreveport
 Mr. Armand W. Roos, Secy., Giddens-
 Lane Bldg., Shreveport
 Mr. Drew Mullins
 324 Ockley Dr., Shreveport
 Dr. and Mrs. William J. Norfleet
 803 Jordan St., Shreveport 39
 Mr. and Mrs. James W. Nolan
 4023 Franklin Ave., New Orleans 22
 Mr. and Mrs. G. Norman Parker
 3416 Coldwell St., Shreveport 56
 Mr. Fred H. Podrasky
 1021 7th St., Lake Charles
 Miss Quida Robertson
 Rt. 2, Box 149, Hammond
 Mrs. W. H. Roche
 3225 Old Mooringsport Rd., Shreveport

Mr. and Mrs. Phil Rosenblath
1047 Delaware St., Shreveport
Mr. and Mrs. Horace Simon
279 Bruce St., Shreveport
Mrs. Ella Mae Slichon
210 E. William David Pkwy., New Orleans 20
Mr. L. O. Wheeler
5836 Fairfield Ave., Shreveport
Mr. W. F. Wilson, Jr.
Rt. 2, Box 71, Hammond
Mr. and Mrs. J. David Wirth
212 Filmore Ave., New Orleans
Dr. and Mrs. R. K. Womack
5930 E. Ridge Dr., Shreveport

MARYLAND

Mr. Arnold Burr
Rt. 2, Bells Mill Rd., Rockville
Mr. Edward P. Carter
5505 42nd Ave., Hyattsville
Mr. W. V. Charter
600 Corway Rd., Bethesda 14
Mr. Frederick M. Kissinger
Rt. 1, Box 17-M, Brandywine
Mr. Lewis H. Knock
Box 143, Frederick
Mr. Harry P. Newton
203 Magnolia Ave., Frederick
Dr. M. Virginia Palmer
136 S. Washington St., Easton
Mr. Charles R. Phillips
Camp Detrick, Frederick
Mr. Wade H. Rice
4320 Underwood St., Hyattsville
Tingle Nursery Co.
Pittsville

MASSACHUSETTS

Mr. John T. Coolidge
1355 Brush Hill Rd., Milton 86
Massachusetts Horticulture Society
300 Mass. Ave., Boston
Mr. B. Townshend
3 Harrison Ave., Beverly

MISSISSIPPI

Thos. E. Ashley
Poplarville
Mrs. Ralph B. Avery
1232 Lyncrest St., Jackson
Mr. Sam M. Bailey
466 Coopers Rd., Jackson
Rev. C. Baker
Box 311, St. Augustine's Seminary,
Bay St. Louis
Mr. M. R. Berry
707 Highschool Ave., Columbia
Mr. Aubrey Blackwell
Bolen Camellia Gardens, Lucedale

Mr. R. L. Brent
1143 Raymond Rd., Jackson
Mr. W. C. Buckley
Lamar Life Ins. Co., Jackson
Mr. J. W. Carlier
132 Glenway Dr., Jackson 6
Mr. Charles L. Chiles
2405 Hardy St., Hattiesburg
Mr. Richard R. Covell
366 Northside Circle, Jackson
Mr. C. A. Davis
21 New St., Natchez
Mr. George Dehmer
904 Pinehurst, Jackson
Dr. Harry E. Ewing
859 N. Main St., Hattiesburg
Dr. John A. Gallogly
1510 Devine, Jackson
Mr. George W. Goodwin
3708 Hawthorne Dr., Jackson
Mr. V. E. Graham
Rt. 3, Hattiesburg
Mrs. H. S. Hagerty
105 28th Ave., Hattiesburg
Dr. Walter C. Hava
Box 305, Waveland
Mr. R. W. Howe
111 Carter Ave., Biloxi
Mrs. Thurman T. Justice, Jr.
Box 103, West Beach, Biloxi
O. H. Johnson
507 Hall Ave., Hattiesburg
Mr. William Kendall
Drawer 577, Natchez
Mr. Norman C. Kent
204 W. Marion Ave., Crystal Springs
Mrs. J. T. Lindsey
3525 Cowan Place, Jackson
Mrs. William H. Mason
1050 6th Ave., Laurel
Mrs. L. L. Mayes
2025 Riverside Dr., Jackson
Mr. J. B. Mayfield
Poplarville
Mr. Jack McDill
Lakeland Apts., C, Jackson
Mr. J. S. McIlwain
3853 Tyrane Dr., Jackson
Mr. J. Walter Michel
1126 Poplar, Jackson
Mr. and Mrs. E. V. Moseley, Jr.
Rt. 1, Liberty Rd., Natchez 3
Mr. J. H. Peebles
Bank of Commerce, Greenwood
Mr. Ramsey W. Roberts
1724 Myrtle St., Jackson 2
Mr. Mitchell Robinson
Woodland Hills, Jackson
Miss Odell M. Sarphie
853 Main St., Hattiesburg

Mr. Adam J. Sauter
Room 951, Edwards Hotel, Jackson
Mrs. W. A. Sullivan
811 N. Union, Natchez
Mr. C. S. Sykes
3603 Terry Rd., Jackson
Dr. W. C. Thompson
712 Lamar Bldg., Jackson
Mr. Wirt Yerger
3850 Eastover Dr., Jackson

MISSOURI

Mr. Robert L. Sweet
1225 W. 64th St., Kansas City

NEBRASKA

W. A. Fraser
2609 Rathbone Rd., Lincoln

NEW HAMPSHIRE

Walter L. Barker
Fairmount Heights Greenhouses, Fair-
mount, Nashau

NEW JERSEY

Mr. William T. Gotelli
66 Crest Dr., South Orange

NEW YORK

Louise V. Belmont
Syosset, Long Island
Mr. Norman Egel
455 Mt. Vernon Ave., Rochester 20
Dr. David Gurin
4 Grosvenor Place, Great Neck
Bailey Hortorium
Cornell University, Ithaca
Albert R. Mann Library
Ithaca
Mr. Bernard Marin
369 Westwood Rd., Woodmere
Willis J. Prophet
55 Meadow Rd., Buffalo 16
Mrs. C. H. Sample
Short Beach Rd., St. James, L. I.
State University of New York
Alfred
Charlotte P. Swezey
The Circle, East Hampton, L. I.
Mrs. Harold C. Whitman
Bedford Village, Bedford

NORTH CAROLINA

Mr. Frank G. Almon
Box 350, New Bern
Mr. Joe Anderson
1602 Trent Blyd., New Bern
Mrs. John H. Andrews
831 Wake Forest Rd., Raleigh

Mr. Joe Austin, Jr.
Four Oaks
Mr. R. B. Boren, Jr.
4504 Winston Rd., Greenboro
Mr. Joe F. Bridges
920 E. 2nd St., Washington
Mrs. W. E. Bryant
Rich Square
Muriel Byrum
130 Morris Circle, Edenton
Mr. Jimmy Carruth
Box 711, Red Springs
D. E. Causey
Box 916, Greensboro
Mr. Clinto A. Cilley
Annex Drawer 7, Hickory
Mrs. L. Avery Corning, Jr.
Box 187, Hamlet
Mr. C. W. Covington
Fuquay Springs
Mr. Louis F. Denaro, III
Box 667, Elizabethtown
Mr. Frank Dowd
2065 Queens Rd., East, Charlotte 7
Dr. J. Allen Easley
409 N. College St., Wake Forest
Mrs. N. E. Edgerton, Jr.
Tatton Hall, Raleigh
John W. C. Entwistle
Rockingham
Mrs. J. A. Fleetwood, Sr.
Conway
Mrs. L. G. Fox
Box 359, Rockingham
Mr. Robert Holmes
Mount Olive
Mr. J. S. Howard
Salemberg
Mr. Sam Hutaff
215 Woodcrest Rd., Fayetteville
Dr. and Mrs. George B. Johnston
455 E. Kivett St., Asheboro
Mr. W. G. Jones
Hillcrest Nurseries
Box 431, Kinston
Mr. W. P. Kemp
Center St., So., Goldsboro
Dr. John S. Lewis
362 N. Center St., Hickory 4
Mr. S. L. Marbury
Box 1450, Wilmington
Mrs. N. B. McCulloch
Box 2017, Raleigh
Mr. T. J. Mitchell
212 S. Front St., New Bern
Mr. Beverly G. Moss
727 Short Dr., Washington
Dr. C. H. Neville
Scotland, Neck
Mrs. Harriss Newman
108 Forest Hills Dr., Wilmington

Mrs. Pearl W. Orrell
Box 878, Wilmington

Dr. W. C. Piver, Jr.
River Rd., Washington Park, Washington

Mrs. Junius K. Powell
105 W. Frink St., Whiteville

Mr. and Mrs. John F. Redding
Box 991, Asheboro

Mr. and Mrs. Henry B. Rehder
Box 477, Wilmington

Mr. Dan Reid
Drawer B, Rose Hill

Mr. W. D. Robbins
Willard

Mr. R. LeRoy Rollins
209 W. Wilson St., Farmville

Mr. C. P. Rose
210 Ann St., Beaufort

Mrs. W. M. Russ
2327 Lake Dr., Raleigh

Mr. and Mrs. E. L. Sheffield
Box 458, Warsaw

Mr. William J. Sherrod
Newton

Mr. W. H. Steed
Steed's Nursery, Candor

Mr. Henry Swanzey
1329 Biltmore Dr., Charlotte

Mr. and Mrs. D. N. Tucker
2727 Columbia Ave., Wilmington

Mrs. Harvey B. Wadsworth
515 Broad St., Box 849, New Bern

Mrs. Carl A. Weston
2213 Greenway Ave., Charlotte 4

Mr. Chester B. Williams
1420 Raeford Rd., Fayetteville

Dr. R. Bertram Williams, Jr.
308 N. 3rd St., Wilmington

Mrs. Broadus Wilson
2108 White Oak Rd., Raleigh

Mr. John W. Wood
1317 Providence Rd., Charlotte 7

Mrs. S. A. Van Every
2812 Sunset Dr., Charlotte

Dr. T. R. Zimmerman
615 W. Farris Ave., High Point

OREGON

Mr. Walter A. Barkus
470 E. Vista Ave., Salem

Mrs. Joel J. Callison
Box 502, Portland 7

Mr. R. De Mott
2534 N.E. 43rd Ave., Portland

Mr. Hugh P. Ford
1114 E. 22, Eugene

Mr. Russel Gainer
518 1st St., Newberg

Mr. Ted Russell
1433 S. E. Tolman, Portland

Mrs. Andrew F. Sears
10145 N. Smith St., Portland

OKLAHOMA

Mr. Lloyd R. Gilmore
2457 E. 34th St., Tulsa

Mr. and Mrs. Charles Polaski
1801 Coventry Lane, Oklahoma City

PENNSYLVANIA

Mrs. C. Brewster Rhoads
Huntingdon Valley

Mr. A. Worsinger
23 N. Beaver St., York

SOUTH CAROLINA

Mrs. J. Ed Anderson
207 Byrd St., Timmonsville

Rudolph Anderson
Box 1144, Greenville

Dr. David S. Asbill
1512 Marion St., Columbia 1

Mrs. B. B. Aycock
701 N. Wilson St., Rock Hill

Mrs. David A. Bigger
725 Crest St., Rock Hill

Mr. Walter Bilbro
6 Johnson Rd., Crescent, Charleston

Mark T. Boatwright
Box 173, Johnston

Mrs. R. F. Brownlee
1600 N. Boulevard, Anderson

Dr. A. F. Burnside
3001 Blossom St., Columbia

Mr. Thomas B. Butler
490 Connecticut Ave., Spartanburg

J. Rainsford Cantelou
Edgefield

Mr. Joseph G. Carter
1199 Alexander Rd., Rock Hill

Mr. R. Elmore Cauthen
Drawer 609, Summerville

Mr. D. M. Des Champs
Rt. 4, Sumter

Mr. and Mrs. Wm. D. Coan
599 Otis Blvd., Spartanburg

Mr. T. H. Curlee
Box 423, Orangeburg

Cypress Gardens
Box 271, Charleston

H. H. Dickson
27 Byrd Blvd., Box 1205, Greenville

Dr. Tyler B. Dunlap
34 Saratoga St., Sumter

Mrs. Mabel R. Eiseman
915 W. Cedar St., Florence

Mrs. E. R. Ellerbee
6443 Briarwood Rd., Columbia

Mr. and Mrs. D. Trowbridge Elliman
23 Tradd St., Charleston

Mr. and Mrs. Frank Griffin
1403 Belt Line Blvd., Box 715, Columbia

- Dr. O. D. Hammond
Blackville
- Miss Helen Harman
202 Greene St., Camden
- Mr. C. N. Hastie, Jr.
Magnolia Gardens, RFD #2, Johns Island
- Mr. E. P. Henderson
The Pines Nursery, Bath
- Mrs. W. T. Henderson
316 Byrd Blvd., Greenville
- Mr. and Mrs. J. G. Holland
Edgefield
- Mr. Albert S. Horne
Box 94, Moncks Corner
- Mrs. Maude Hundert-Mark
Yemassee
- H. V. Jervey
3503 Hanson Rd., Columbia
- Mr. L. H. King
Box 136, Mount Pleasant
- Mr. Dick Lashley 39853
Carolina Theatre, Greenville
- Mansfield Latimer
Box 166, Rock Hill
- Mr. and Mrs. W. H. Lawrence
412 W. View Ave., Anderson
- Mr. H. L. Lawton, Jr.
Box 27, Georgetown
- Lonnie T. Leitner
RFD #3, Marion
- Mr. Wendell M. Levi
417 W. Calhoun, Drawer 751, Sumter
- Mrs. Maxine G. Long
665 Jones Ave., Marion
- M. L. Love
Florence
- Mr. W. B. Love
502 Kalmia Dr., Columbia
- Mrs. E. Curtis Mackey
Heath Springs
- Mr. A. L. Markham
Moncks Corner
- Mr. J. F. Marscher
Farmers Produce Exchange, Beaufort
- Mr. F. D. Marshall, Sr.
112 E. Main St., Rock Hill
- Mr. W. R. Marvin
123 Walters St., Walterboro
- Guy D. and Alma F. McDonald
1205 Sand Bar Ferry Rd., Beech Island
- Mr. R. F. McGee
418 Graham St., Florence
- Mr. W. B. Meacham
Fort Mill
- Dr. and Mrs. Henry G. Mealing
103 W. Forest Ave., N. Augusta
- Dr. and Mrs. I. Jenkins Mikell
120 Edista Ave., Columbia
- Mrs. R. C. Morris
Yemassee
- Mrs. J. M. Napier
Darlington
- Mr. James S. Nevils
309 Reynolds St., Blackville
- Mr. F. D. Owen
107 Edisto Ave., Columbia
- Mr. A. R. Parler
Box 164, Elloree
- Mr. A. E. Peterman
Ridgeland
- Dr. R. F. Poole
Clemson College, Clemson
- Dr. H. R. Pratt-Thomas
24 Tradd St., Charleston
- Mr. C. F. Prettyman
Summerville
- Mrs. E. J. Prevatt
Rt. 4, Edgewater Park, Charleston
- Mr. F. H. Prevost
RFD #1, Piedmont
- Mr. Z. D. Robertson
Robinwood Farm, Rt. 1, Abbeville
- Mr. and Mrs. O. Frank Robinson
503 Jackson Square, Anderson
- C. K. Sease
2713 Columbia Ave., Columbia
- Mr. Calder W. Seibels
Box 1199, Columbia
- Mr. P. L. Spivey
117 Singletary Ave., Lake City
- Eoline Stack
737 Abelia Rd., Columbia
- Mr. W. B. Summersett, Jr.
600 S. Holly St., Columbia
- Mrs. J. K. Thomas
115 Franklin Dr., Florence
- Mr. Harry C. Travers
McClellanville
- H. A. Venning
Box 334, Summerton
- Mr. and Mrs. L. C. Wannamaker
407 Greene St., Cheraw
- Mr. Plato H. Watts
109 S. Franklin Dr., Florence
- Mrs. H. W. Weaver
530 E. Hampton St., Darlington
- Mr. Russell S. Wolfe
Middlepen Plantation, Orangeburg
- Mr. C. H. Womack
Box 230, Florence
- Womack-Brown Garden Shop
325 N. Main St., Sumter

TENNESSEE

- Dr. M. L. Fuller
277 S. Perkins, Memphis
- Mrs. Milton Smith Lewis
303 S. Wilson Blvd., Nashville
- Mr. W. Neal Rogers
1733 Autumn Ave., Memphis 3

TEXAS

- W. R. Ash
RFD #1, Carthage
- Mr. V. J. Barranco
2745 San Jacinto St., Beaumont

Mr. W. M. Bills
 Rt. 1, Box 525, Beaumont
 Mrs. George W. Bookhout
 5649 Gaston Ave., Dallas 14
 Mr. J. W. Brady
 Box 2706, Beaumont
 Mr. R. E. Brown
 309 Magnolia Lane, Longview
 Mr. B. M. Cantine
 Box 1445, Houston 1
 Mr. A. S. Crisp
 4516 Mockingbird Lane, Dallas
 Mrs. Carl V. Deakins
 204 Crestwood Dr., Fort Worth
 R. T. De Laureat
 4515 Evergreen, Port Arthur
 Mr. George Du Brul
 3431 Lovers Lane, Dallas
 W. C. Budney
 Box 287, Texarkana
 Mr. Thomas Eagleson
 1248 9th Ave., Port Arthur
 Mrs. E. G. Edson
 297 Ridgeland Ave., Beaumont
 Lilly Ferguson Fisk
 4202 Wildwood Rd., Austin
 Mr. and Mrs. Ed Fox
 209 Goodhue Bldg., Beaumont
 Mr. W. P. Fulton
 3604 Greenbrier, Dallas
 Mrs. Jake Giles
 4120 E. Lucas Dr., Beaumont
 Mr. Robert F. Glazener
 1624 East Drive, Beaumont
 Mr. and Mrs. L. I. Griffin
 Box 1155, Corsicana
 Mr. and Mrs. Harold Hamlin
 Box 671, Jacksonville
 Mrs. H. M. Harrell, Sr.
 5 Courtland Place, Houston 6
 Mr. Gerald L. Henderson
 2205 E. Jackson, Harlingen
 Mr. L. C. House
 5626 E. Mockingbird Lane, Dallas
 Mr. A. R. Hunt
 care J. C. Penney Co., Laredo
 Mrs. J. Lee Johnson III
 1209 Washington Ter., Fort Worth 7
 Dr. Chester E. Kitchens
 723 Main St., Texarkana
 Dr. M. D. McCauley
 3309 Gilbert St., Austin 3
 Dr. Robert P. McDonald
 4100 Ranier Ct., Fort Worth 9
 Dr. J. R. McKinney
 418-21 State Natl. Bk. Bldg., Texarkana
 Dr. E. C. McRee
 205 Medical Bldg., Port Arthur
 Mrs. Herbert Marcus
 Oakwood Lane, Dallas
 Mr. John D. Marr
 27 Briar Hollow Lane, Houston 19
 Mr. George B. Morgan
 Box 2969, Beaumont
 Mr. Herman A. Neff
 5002 San Jacinto St., Dallas
 Mrs. John D. Norwood
 1215 Sylvan, Palestine
 Mr. W. A. Orth
 3445 Hanover, Dallas 25
 Mr. Don D. Parker
 2405 Harrison, Amarillo
 Mr. Sam Partlow
 Box 205, Liberty
 Mrs. George V. Pattison
 1944 Temple Dr., Houston 19
 Mr. George Peterkin, Jr.
 4519 Oakshire, Houston 6
 Mr. Pat T. Peyton
 2293 Hazel, Beaumont
 Mr. Ralph Pinkus
 7610 Northaven Rd., Dallas
 Mr. W. D. Pleasant
 2480 Buchanan, Beaumont
 Dr. Fred Pray
 240 Manor Dr., Beaumont
 Mr. K. W. Schulze
 4025 5th St., Port Arthur
 Mrs. H. J. L. Stark
 Stark Bldg., Orange
 Mrs. Cecil Starly
 Box 666, Longview
 A. R. Stevenson
 2606-8 S. Stonewall St., Greenville
 Mr. John V. Strange
 5607 Candlewood, Houston 19
 Mrs. Mary A. Steed
 3126 9th St., Port Arthur
 Mrs. J. E. Thiele
 5525 Voth Rd., Beaumont
 Mr. and Mrs. W. H. Tillery
 614 Pearl St., Beaumont
 Mr. A. M. Unger
 3309 Nottingham, Houston 5
 Mr. and Mrs. Dmitri Vail
 4245 Armstrong Pkwy., Dallas 5
 Ernest Wright
 2407 N. Main St., Houston 9

VIRGINIA

Dr. James W. Anderson
 303 Medical Arts Bldg., Norfolk 10
 Mr. J. G. Baker
 204 Burleigh Ave., Norfolk 5
 Dr. T. C. Bradshaw
 1st Natl. Bk., Blackstone
 Mrs. J. W. Britt
 3920 Holly Ave., Norfolk 4
 Herman Capps
 200 Talbot Hall Rd., Norfolk 5
 Mr. L. W. Caulk, Jr.
 527 Riverview Dr., Suffolk

Dr. and Mrs. Forrest E. Clements
4914 N. 34th St., Arlington 7

Mr. and Mrs. J. C. Cockrell
497 Whealton Rd., Hampton

John E. Coleman
Rt. 1, Box 70, Portsmouth

Mr. Joseph J. Conner
Box 50, Phoebus Sta., Hampton

Marvin Douglas Cooke
333 Fulton St., Hampton

Mrs. Hugh L. Dougherty
1306 Windsor Point Rd., Norfolk

Ethel M. Ewell
710 N. Ocean View Ave., Norfolk 3

Mrs. Lorraine Annette Fletcher
Bellgrove, Leesburg

Dr. E. D. Gatten, Jr.
Sycamore Rd., Franklin

Mr. J. V. Gettle
5808 Granby St., Norfolk 5

Dr. J. M. Habel, Jr.
726 Jones St., Suffolk

Mr. Hugh C. Harwood
130 James River Dr., Warwick

Mr. Frederic Huette
Lafayette Pk., 35th and Granby, Norfolk

Hill's Camellia Gardens
1722 N. Glebe Rd., Arlington

Mr. and Mrs. Charles F. Holden
100 W. Rosemont Ave., Alexandria

A. P. Hopewell
Deep Creek Blvd. and Kirby, Portsmouth

Mr. W. Kemble Johnson
18 Holly Dr., Warwick

Mr. and Mrs. Robert E. Johnson
Box 280, Wytheville

T. Albert and Joyce T. Knabe
5 E. Commodore Dr., Maury Place, War-
wick

Charles O. Lancaster
Box 271, Suffolk

Mr. J. L. Legendre
Wachapreague

Mr. William D. Mason
5415 Lakewood Dr., Norfolk 9

Mr. James R. Moore
11 N. Boxwood St., Hampton

Mr. J. H. Neise, Jr.
321 Selden Rd., Warwick

Mrs. H. C. Old
Box 303, Virginia Beach

Mr. Alison J. Parsons
7439 Flicker Point, Algonquin Park, Nor-
folk

Mr. Henry M. Pinner
Box 155, Suffolk

Mr. and Mrs. Oscar Rhodes
8605 Meadowbrook Lane, Norfolk 3

Lyle M. Smith
36 Franklin Rd., Warwick

Mr. W. R. Taylor
138 Manteo Ave., Hampton
Dr. and Mrs. Wade L. Traynham
103 Boxwood St., Hampton

Charles F. Urquhart, Jr.
Courtland

Dr. and Mrs. Thomas F. Wheeldon
6311 Three Chopt Rd., Richmond 20

Rome M. Womack, Jr.
549 Main St., Danville

WASHINGTON

Mr. Dean H. Asper
418 W. 25th St., Vancouver

Mr. William Brodie
Rt. 1, Everett

Mr. J. A. Buzard
Lake Shore Gardens, Rt. 1, Box 308,
Bellview

Mr. Charles Elliott
Rt. 5, Box 748, Bremerton

AUSTRALIA

Mr. Walter G. Hazlewood
Epping, New South Wales

Crichton Raoul Merrillees
311 Carlisle St., St. Kilda S. 16, Victoria

Royal Horticultural Society of Victoria
care Mr. L. M. Saunders, 90 Grey St.,
St. Kilda S. 2., Victoria

Mr. Alfred L. Stewart
183 Abbotsford St., North Melbourne

Mr. F. S. Tuckfield
3 Manor Grove, North Caulfield, Victoria

Prof. E. G. Waterhouse
17 McIntosh St., Gordon, N.S.W.

CHINA

Mr. Ralph Dean
Garden Dept., Hong Kong

ENGLAND

Mr. Charles Puddle
Bodnant, Tal-Y-Cafn, Denbigshire, North
Wales

Royal Horticultural Society Gardens,
Wisley, Ripley, Woking, Surrey

Royal Botanic Gardens,
Key, Richmond, Surrey

FRANCE

Le Vicomte de Noailles
11, Place des Etats Unis, Paris

GERMANY

Bibliothek der Hochschule
Hannover, Z. Zt. Sarstedt b. Hann

HAWAII

Mr. Herbert C. Shipman
10 Shipman St., Hilo
Mrs. Leslie W. Wishard
Haina, Hamakua

JAPAN

Eikichi Satomi
care Ishii, 5-290 Omiya-mae, Suginami-
Ku, Tokyo

NEW ZEALAND

Mr. Victor Davies
New Plymouth

SOUTH AFRICA

George Carter & Co.
226 Church St., Pietermaritzburg, Natal

AFFILIATED SOCIETIES OF SCCS

CENTRAL CALIFORNIA CAMELLIA SOCIETY

- May Andrews
415 Yale Ave., Fresno
- Mrs. K. Anoshian
4305 Lyell, Fresno
- Mr. Ralph Aten
1550 Poplar, Fresno
- Mrs. R. R. Balkwill
716 Vassar Ave., Fresno
- Mrs. Agnes Benson
Box 295, Fowler
- Mr. and Mrs. H. H. Collier
Box 112, Chowchilla
- Mr. and Mrs. H. H. Courtright
4689 N. Van Ness Blvd., Fresno
- Dr. Lynn Fawns
956 N. Fulton, Fresno
- Allen L. Funch, Jr.
5292 B Palm, Fresno
- Mr. and Mrs. M. K. Gibbs
369 Ferger Ave., Fresno
- Mrs. W. A. Gregory
352 N. J St., Dinuba
- Mr. and Mrs. George T. Goodhue
121 S. Chestnut Ave., Fresno
- Mr. and Mrs. J. L. Green
808 Robertson Blvd., Chowchilla
- Mr. and Mrs. Glenn Harnish
5775 N. Van Ness Blvd., Fresno
- Wilber S. Hass, Sr.
53 20th St., Merced
- Mr. John Holland
2915 Farris Ave., Fresno
- Mr. and Mrs. V. R. Horstmann
1412 Poplar, Fresno
- Mr. John Juergens
625 Brown, Fresno
- Mr. and Mrs. Paul H. Keane
919 Swift, Fresno
- Mr. Donald Kleim
468 Poplar, Fresno
- Mrs. Bernice Lindeaur
1105 Yale, Fresno
- Mrs. J. A. Manning
846 Franklin Ave., Fresno
- Mr. and Mrs. Robert O. McMahon
4411 N. Van Ness Blvd., Fresno
- Mr. Robert A. Moorman
3827 Harvey Ave., Fresno
- Mr. and Mrs. Maynard Munger
5140 N. Fruit Ave., Fresno
- Dr. Joseph B. Murphy
3845 Terrace, Fresno
- Mr. and Mrs. Julius B. Nielsen
440 Ferger Ave., Fresno
- Mr. and Mrs. F. W. Paul
3293 W. Kearney Blvd., Fresno
- Mrs. Ruth Petzey
605 McKinley Ave., Fresno
- Mrs. Lee Rice
Fort Baker Ranch, Kneeland
- Mr. and Mrs. Howard L. Riggs
400 S. Lake, Madera
- Mr. and Mrs. W. D. Robb
5192 E. Jensen, Fresno
- Mr. and Mrs. Milo Rowell
5990 Butler, Fresno
- Molly B. Rusconi
2316 Jensen Ave., Sanger
- Mrs. Helen M. Smith
4774 E. Nevada, Fresno
- Mr. and Mrs. Kermit Smith
315 Clinton, Fresno
- K. E. Thompsen
2038 Yale, Fresno
- Mr. and Mrs. Al W. Taylor
2235 Harvard, Fresno
- Mr. and Mrs. Louis L. Valley
2710 N. Dearing Ave., Fresno
- Mr. and Mrs. Ralph W. Watson
3555 Huntington Ave., Fresno
- Mr. and Mrs. Herbert H. Wheaton
3695 Van Ness Blvd., Fresno
- Mrs. G. W. E. White
2431 N. McCall, Selma
- Mr. and Mrs. Homer Wilson
734 University Ave., Fresno
- E. E. Weymouth
1644 W. White Bridge, Fresno
- Mr. and Mrs. M. W. Weymouth
1546 Poplar, Fresno

CAMELLIA SOCIETY OF KERN COUNTY

- Mr. and Mrs. A. C. Adams
2827 Sunset, Bakersfield
- Dr. Elizabeth Admiral
101 Pacific St., Bakersfield
- Mrs. Louis Agnetti
325 Quincy St., Bakersfield
- Dr. L. Almklov
2609 Bank St., Bakersfield
- Maria Bell
901 Bradshaw St., Bakersfield
- Mary Lee Bottorff
Buttonwillow
- Mr. Alwyn M. Briones
408 18th St., Bakersfield
- Mrs. Fern Buerkle
2445 Beech St., Bakersfield
- Mrs. William Buerkle
2437 Beech St., Bakersfield
- Mr. and Mrs. Edward Carnes
136 Acoma St., Bakersfield
- Mrs. Orville Clark
Box 1009, Bakersfield
- Mr. Robert Cholet
1710 Verde St., Bakersfield
- Mr. Earl C. Cook
430 Baldwin Rd., Bakersfield
- Davis Nursery
314 E. Casa Loma Dr., Bakersfield
- Mr. and Mrs. Harry Davis
303 Pine St., Bakersfield
- Mrs. J. A. Duffy
337 Philippine St., Taft
- Mrs. Allison Eley
1230 S. Union Ave., Bakersfield
- Evergreen Nursery
630 H St., Bakersfield
- Miss Mildred Foley
719 Niles, Bakersfield
- Dr. and Mrs. Clinton Fowler
300 Fairway Dr., Rt. 7, Stockdale,
Bakersfield
- Mr. and Mrs. G. H. Galbraith
2315 A St., Bakersfield
- Mr. and Mrs. H. J. Galbraith
2905 Sunset, Bakersfield
- Mr. and Mrs. Horace Grayson
2331 20th St., Bakersfield
- Mrs. Georgia Greer
224 H St., Bakersfield
- Mr. and Mrs. W. J. Haberfelde
1800 2nd St., Bakersfield
- Mrs. E. J. Haberkern
1825 Brundage Lane, Bakersfield
- Dr. and Mrs. W. W. Hall
2511 Terrace Way, Bakersfield
- Mrs. Adolph Hansen
2328 19th St., Bakersfield
- Mrs. Tracy Harkness
1101 Pershing Dr., Bakersfield
- Mrs. Elsie Hornkohl
245 El Cerrita Dr., Bakersfield
- Miss Ruth Hahn
2715 L St., Bakersfield
- Mrs. William Howell, Jr.
2428 21st St., Bakersfield
- Mr. and Mrs. Robert Johnson
1902 Niles St., Bakersfield
- Mr. and Mrs. Frank Kratka
2807 Sunset Ave., Bakersfield
- Mr. and Mrs. Walter Kane
415 Fairway Dr., Stockdale, Bakersfield
- Mrs. L. F. Lake
629 Oleander, Bakersfield
- Mr. Yale H. Langworthy
2029 Ester Dr., Bakersfield
- Mr. and Mrs. W. K. Lyons
2714 Sunset Ave., Bakersfield
- Jerry Mailman
2905 F St., Bakersfield
- Mrs. Norman Main
925 Oleander Ave., Bakersfield
- Dr. Lucille B. May
2615 22nd St., Bakersfield
- Mrs. W. E. McFaddin
419 Houchin Rd., Bakersfield
- Dr. and Mrs. Keith McKee
2216 Pine St., Bakersfield
- Mr. and Mrs. E. A. McMillan
914 Oregon St., Bakersfield
- Mr. and Mrs. William C. Moses
109 La Mesa Dr., Bakersfield
- Dr. C. F. Mundy
116 Western, Bakersfield
- Mr. and Mrs. F. L. Norton
1108 Darian Dr., Bakersfield
- Dr. and Mrs. Roderick Ogden
2501 Ming, Bakersfield
- Mr. and Mrs. L. J. O'Kelly
1309 Nile St., Bakersfield
- Mr. and Mrs. C. H. Phillips
2601 22nd St., Bakersfield
- Mrs. B. H. Priest
6025 S. Union Ave., Bakersfield
- Mr. and Mrs. Harry Putman
2930 Chester Lane, Bakersfield
- Mrs. Henry J. Regehr
115 Panorama Dr., Bakersfield
- Mr. and Mrs. Perry R. Robbe
1009 Snyder Lane, Bakersfield
- Mr. and Mrs. L. H. Rockholt
627 D St., Taft
- Mrs. Henry Rodoni
2466 Beech St., Bakersfield
- Mrs. Bernard Sasia
241 Lincoln St., Bakersfield
- Mr. and Mrs. L. W. Saunders
2731 18th St., Bakersfield
- Mrs. Emily Schweitzer
2931 San Emidio, Bakersfield
- Mrs. Alice L. Scarlett
325 Eye St., Bakersfield

CAMELLIA SOCIETY OF KERN COUNTY (Continued)

Mrs. Robert Scherb
717 Holtby Rd., Bakersfield
Wesley Selvidge
Box 164, Buttonwillow
Mrs. Rueben B. Sharp
300 S. Real Rd., Bakersfield
Mrs. Frank Simon
Rt. 3, Box 275, Bakersfield
Mrs. H. H. and Miss Elizabeth Spears
2708 Sunset Ave., Bakersfield
Mrs. Eunice Stewart
904 Knott St., Bakersfield
Mr. Walter Stiern
1729 Owens St., Bakersfield
Mr. and Mrs. A. R. Svendsen
2121 2nd St., Bakersfield
Margaret Sworder
19 Vernal Place, Bakersfield
Mr. and Mrs. Paul Taylor
2108 Kentucky St., Bakersfield

Mr. Cecil Tibbs
Box 424, Bakersfield
Mrs. Fannie Tracy
Rt. 1, Box 178, Buttonwillow
Mrs. A. L. Trowbridge
2724 19th St., Bakersfield
Mr. and Mrs. Lawrence Weill
3020 21st St., Bakersfield
Flora West
1104 Wilson, Oildale
Mrs. C. L. West
2820 18th St., Bakersfield
Mrs. R. E. White
2617 20th St., Bakersfield
Mr. Charles Wickersham
1531 19th St., Bakersfield
Mr. and Mrs. Charles Yahns
210 Spruce, Bakersfield

CAMELLIA SOCIETY OF ORANGE COUNTY

Mr. C. W. Adams
18261 Serrano, Rt. 3, Orange
Mrs. Fannie Bates
4602 Valley View Dr., Yorba Linda
Mrs. E. K. Burdick
12311 Chapman Ave., Anaheim
Mrs. Duane Berge
2271 Mesa Dr., Santa Ana
Mr. and Mrs. George T. Butler
1121 Orange Ave., Santa Ana
Mrs. Bessie Calhoun
1111 N. Towner St., Santa Ana
Mr. and Mrs. K. M. Claypool
275 N. Orange, Orange
Mr. and Mrs. Lynn Crawford
2202 N. Fowler, Santa Ana
Mr. and Mrs. Allan Crooks
612 E. 20th St., Santa Ana
Mrs. Adam Darling
2424 Riverside Dr., Santa Ana
Mr. and Mrs. Lawrence Ehlen
10232 Center Dr., Orange
Mr. Arthur E. Falk
1124 Valencia Mesa Dr., Fullerton
Mr. and Mrs. F. Wayne Flinn
626 S. Sycamore, Santa Ana
Mr. Fred Forgy
204 1st Natl. Bk. Bldg., Santa Ana
Mrs. Perry V. Grout
11312 Santiago Blvd., Orange
Mrs. A. C. Honer
615 W. Santa Clara St., Santa Ana
Mr. and Mrs. F. E. Kahen
1233 W. Myrtle, Santa Ana
Mr. and Mrs. Harold Larson
212 S. Orange St., Orange
Mrs. Odelle Marks
106 Marine Ave., Balboa Island

Mr. Paul M. McClellan
1502 N. Lowell, Santa Ana
Mr. and Mrs. William H. McGrath
1229 W. Myrtle St., Santa Ana
Mr. and Mrs. D. Nelson
1014 W. 20th St., Santa Ana
Mrs. Fred Newcomb
R.D. 1, Box 74, Santa Ana
Mr. and Mrs. Joseph A. Paino
333 N. Maplewood, Orange
Mr. and Mrs. W. E. Patterson
12612 Newport Ave., Santa Ana
Mrs. Clara E. Paul
2535 Valencia, Santa Ana
Roy W. Potter
501 W. Santa Clara, Santa Ana
Mr. and Mrs. Robert Powell
109 Wright St., Santa Ana
Mr. and Mrs. R. W. Ragland
1440 E. Chapman Ave., Orange
Mr. and Mrs. Charles M. Reed
1019 W. 19th St., Santa Ana
Mr. and Mrs. W. H. Riffle
1554 W. Washington St., Santa Ana
Mr. and Mrs. Grant Sylvester
330 E. Bishop, Santa Ana
Mrs. C. Merle Waterman
1406 N. Towner, Santa Ana
Mr. and Mrs. E. A. Watson
14851 S. Yorba St., Santa Ana
Mrs. George Wheat
2442 Bonnie Brae, Santa Ana
Mr. and Mrs. Arthur F. Wirtz
529 S. Grand, Orange
Mr. W. E. Woody
610 E. 17th St., Santa Ana
Mr. and Mrs. Thomas F. Zuck
2510 N. Valencia, Santa Ana

POMONA VALLEY CAMELLIA SOCIETY

- Mr. and Mrs. E. J. Alvarado
308 Montgomery Ave., Ontario
- Mr. and Mrs. Howard Asper
1405 Flanders Rd., La Canada
- Mr. and Mrs. E. R. Bailey
435 Berleley Rd., Claremont
- Mr. and Mrs. Stanley Barnes
1080 Indian Hill, Claremont
- Mr. and Mrs. George H. Bell
Mt. San Antonio College, Walnut
- Mr. and Mrs. Bancroft Benner
170 N. Monte Vista, San Dimas
- Mr. and Mrs. George Y. Blair
4750 Somerset Dr., Riverside
- Mr. and Mrs. Floyd R. Bunnelle
14001 Bunnelle Ave., San Dimas
- Mr. and Mrs. Jack Campbell
735 Dartmouth, Claremont
- Mr. and Mrs. Stuart Coulter
1752 W. Bonita Ave., Charter Oak
- Mr. and Mrs. Charles Daves
1381 Ballerina Place, Pomona
- M. H. England
1122 Oxford, Claremont
- Mr. C. D. Cothran
1105 N. San Dimas
- Mr. and Mrs. Mack Dinwiddie
786 Altura Ct., Pomona
- Mr. and Mrs. R. B. Flora
1872 S. White Ave., Pomona
- Mr. and Mrs. Merle S. Gish
1845 Pennsylvania Ave., Riverside
- Mr. and Mrs. Walter Harmsen
366 E. Columbia, Pomona
- Mr. and Mrs. Oliver S. Hein
3398 Vista Ave., Riverside
- Mrs. Gertrude M. Hill
231 W. 6th St., Claremont
- Mr. and Mrs. J. A. Holland
1650 W. Foothill, Upland
- Mr. and Mrs. Lynn Honaker
2775 N. San Antonio, Claremont
- Marton K. Johnson
No. San Dimas
- Mr. and Mrs. T. C. Konkel
3334 Campus Ave., Claremont
- Mrs. Earlda B. Lane
240 McKinley, Pomona
- Mrs. E. W. Miller
4159 3rd St., Riverside
- Miss Etta McDonald
650 S. Amelia Ave., San Dimas
- Mr. Eunice Nease
2741 Lincoln Ave., La Verne
- Mr. and Mrs. B. M. Pace
638 Pine St., Upland
- Mr. Harold Pearson
178 E. Aliso, Pomona
- Mr. and Mrs. Stanley Plummer
416 San Dimas
- Mr. Frank Potter
4942 7th St., Claremont
- Mrs. George Pugsley
560 E. Pasadena St., Pomona
- Mr. and Mrs. Jack Rains
Hammond Lumber Co., Pomona
- Mr. and Mrs. L. W. Reber
574 S. Lemon Rd., Walnut
- Mr. and Mrs. Hubert Reeves
615 N. Erie St., Pomona
- Mrs. G. S. Reynolds
645 E. Alvarado, Pomona
- Mr. and Mrs. Harold Rowe
456 N. 2nd St., Upland
- Mr. and Mrs. D. L. Shattuck
824 W. 20th St., Upland
- Mr. and Mrs. Raymond Smith
1272 Los Robles, Pomona
- Mr. Clark Thomas
128 W. 6th St., San Dimas
- Mr. and Mrs. H. L. Tompkins
4164 Euclid Ct., Riverside
- Mr. and Mrs. Dallas I. Walker
218 E. Cienaga Ave., San Dimas
- Mr. and Mrs. Soby Yamamoto
1081 Weber St. Pomona

SAN DIEGO CAMELLIA SOCIETY

- Mr. and Mrs. James E. Andrews
4268 50th St., San Diego 15
- Mr. and Mrs. J. Howard Asper, Jr.
Box 266, Rt. 4, Escondido
- Mr. and Mrs. Harvey H. Atherton
2937 28th St., San Diego 4
- Mr. and Mrs. Lucian C. Atherton
2255 Bancroft St., San Diego 4
- Mr. and Mrs. Ed C. Ballin
Box 4124 North Park Sta., San Diego 4
- Mr. Charles Barnes
4512 Max Dr., San Diego 5
- J. H. Barton
4220 Norfolk Terrace, San Diego 16
- Capt. and Mrs. T. T. Beattie
1025 F Ave., Coronado
- Mr. and Mrs. Leo Blottin
2568 Bonita St., Lemon Grove
- Jean Bovet
4777 Orange Ave., San Diego 15
- Mr. and Mrs. J. W. Bradford
3553 Fairmont Ave., San Diego 5
- Dr. and Mrs. Robert F. Brown
3843 Wildwood Rd., San Diego 7
- Mrs. C. S. Campbell
Box 335, La Mesa
- Mr. and Mrs. L. L. Carringer
825 Harbor View Pl., San Diego 6
- Mr. and Mrs. Ralph Caulkins
8510 Chevy Chase Dr., La Mesa
- Alice M. Clark
3243 W. Harbor View Dr., San Diego 6
- Mr. T. J. Clark
8246 University, La Mesa
- Mr. and Mrs. C. R. Clerk
Box 351, Alpine
- Mrs. Lena Clinton
1947 Dale St., San Diego 2
- Miss Dorothea Cole
330 22nd St., San Diego 2
- Mr. and Mrs. Arnold S. Cosgrove
2212 Fort Stockton Dr., San Diego 3
- Mr. and Mrs. O. W. Cotton
2900 Nichols St., San Diego 6
- Margaret Crow
1633 Myrtle, San Diego 3
- Mr. and Mrs. William Eade
3111 Macauley, San Diego 6
- Mrs. Mary G. Edwards
944 Orma Drive, San Diego 6
- Mr. and Mrs. George M. Ellis
1036 Tarento Dr., San Diego 7
- Mr. and Mrs. A. Erlanson
2530 Albartross St., San Diego 1
- Mr. and Mrs. Dave Fenner
643 W. Redwood St., San Diego 1
- Mr. and Mrs. L. R. Folda
9333 Dillon Dr., La Mesa
- Ova H., and Jean Garcia
Rt. 2, Box 677, El Cajon
- Mr. and Mrs. W. L. Gibson
3765 Pio Pico, San Diego 6
- Mr. and Mrs. Lester B. Goodall
3036 Suncrest Dr., San Diego 12
- Mr. and Mrs. E. J. Greenleaf
4346 52nd St., San Diego 15
- Mr. Lewis Greenleaf
3427 29th St., San Diego 4
- Mr. and Mrs. Jay O. Greeno
4577 Bancroft, San Diego 16
- Miss Alice M. Greer
2972 1st Ave., San Diego 3
- Mr. and Mrs. William K. Hanigan
Box 502, Ramona
- Mr. and Mrs. Harry C. Hargreaves
4261 Randolph St., San Diego 3
- Mr. and Mrs. A. C. Harris
702 Rosecrans, San Diego 6
- Mrs. Fred Hebert
8845 Country Club Pl., Spring Valley
- B. O. Hemus
USS Romulus, ARL 22, FPO San Francisco
- Mr. and Mrs. J. O. Henry
Rt. 1, Box 328, Ramona
- Mr. and Mrs. J. Wells Hershey
Rt. 2, Box 587, Lakeside
- Dr. E. Clark Hubbs
1370 San Luis Rey Dr., Glendale 8
- Mr. and Mrs. H. S. Huntington
910 W. Muirland Dr., La Jolla
- Mrs. Mary Jenkins
7771 Mt. Vernon, Lemon Grove
- Mr. and Mrs. R. M. Joseph
6793 Hibiscus Dr., Lemon Grove
- Mr. and Mrs. George Kalin
3121 Fairmount Ave., San Diego 5
- Mr. and Mrs. Warren A. Kenworthy
Box 492, Ramona
- Mr. and Mrs. E. F. Kohl
718 H Ave., Coronado
- Mr. and Mrs. William Lane
6151 Madrid Dr., San Diego 15
- Mrs. Leona Laun
1115 Roosevelt Ave., National City
- Dr. Roy M. Ledford
2881 4th Ave., San Diego 3
- Mr. and Mrs. Byron F. Lindsley
6138 Madrid Dr., San Diego 15
- Mr. and Mrs. Chas. Mann
944 Orma Drive., San Diego 6
- Mr. and Mrs. A. J. Mars
3838 44th St., San Diego 5
- Mrs. Irene Martin
2528 33rd St., San Diego 4
- Mr. and Mrs. Robert Meier
3662 42nd St., San Diego 5
- Mrs. Fred C. Melvin
3605 Utah St., San Diego 4

SAN DIEGO CAMELLIA SOCIETY (Continued)

- Mr. and Mrs. Willis H. Miller
4366 Altamirano Way, San Diego 3
- Mr. and Mrs. Stanley W. Miller
1590 E. Chase Ave., El Cajon
- Mr. and Mrs. F. L. Montney
3760 Herbert St., San Diego 3
- Mrs. Sally La Nier
1011 Pearl St., La Jolla
- Dr. Blythe W. Pahl
4205 Narragansett Ave., San Diego 7
- Mr. and Mrs. R. H. Parker
3927 Loma Alta Dr., San Diego 15
- Ada L. Perry
335 Ozark St., San Diego 2
- Dr. and Mrs. Edward Person
3511 Elliott St., San Diego 6
- Mr. and Mrs. W. E. Peyton
3065 C St., San Diego 2
- Mr. and Mrs. Charles Polzer
4589 Euclid, San Diego 15
- Mr. and Mrs. George Poulter
4605 Campo Dr., San Diego 15
- Ova H. Preshea and Jean Garcia
Rt. 2, Box 677, El Cajon
- Mrs. Noma Rader
4170 37th St., San Diego 5
- Mrs. Frances Roberts and Mr. Ed Harrison
1134 Glendon Ave., Los Angeles 24
- Mr. and Mrs. Paul C. Roberts
233 Lobeiy Ave., San Clemente
- Mr. and Mrs. J. Sakamoto
2946 Sunset St., San Diego 10
- Mr. and Mrs. Don V. Scofield
2621 32nd St., San Diego 4
- Mrs. R. I. Seder
2352 Cypress St., Lemon Grove
- Mr. Joseph W. Sefton, Jr.
Box 1817, San Diego 12
- Mr. and Mrs. E. R. Settle
3795 Herbert St., San Diego 3
- Mr. and Mrs. Ralph E. Smith
4421 Upland St., La Mesa
- Amy N. Sonka
Box 246, Lemon Grove
- Mr. and Mrs. V. E. Stark
3711 29th St., San Diego 4
- Mr. Lloyd Stell
Chase Avenue, El Cajon
- Dr. and Mrs. Reuben Tellam
Box 343, Ramona
- Mrs. Mary L. Toal
4453 51st St., San Diego 15
- Capt. F. E. Vensel
9419 Sierra Vista, La Mesa
- Mr. and Mrs. Victor J. Wagoner
323 W. Valencia Ave., San Clemente
- Mr. and Mrs. Walter Watchorn
RFD Box 162 B, Oceanside
- Mrs. George and Miss Frances Wills
7785 Mt. Vernon St., Lemon Grove
- Dr. and Mrs. Anton S. Yuskis
233 A St., San Diego 1

TEMPLE CITY CAMELLIA SOCIETY

- Irving and Goldie Antram
1704 N. Ave. 56, Los Angeles 42
- Mrs. Evelyn Barnett
6125 N. Sultan Ave., Temple City
- Mrs. L. E. Beachamp
6051 N. Rosemead Blvd., Temple City
- Mr. and Mrs. C. E. Bengston
8744 Smallwood Ave., Downey
- Mr. Howard J. Blum
642 G St., Oxnard
- Boorman's Camellia Gardens
9328 E. Broadway, Temple City
- Lawrence R. and Alice W. Bryant
409 Coolidge Dr., San Gabriel
- Mrs. E. C. Burcky
519 Alhambra Rd., San Gabriel
- Mrs. F. W. Burcky
1375 Bellwood Rd., San Marino
- Mr. Stewart R. Campbell
8601 E. Longden Ave., San Gabriel
- Mr. and Mrs. Guy Corfield
450 Gerona Ave., San Gabriel
- Mr. and Mrs. Ralph G. Corwin
4825 N. Willard Ave., Rosemead
- Elizabeth C. Councilman
11549 E. Bryant Rd., El Monte
- Mrs. Theresa De Laney
532 N. Gerona Ave., San Gabriel
- Mr. and Mrs. W. F. Fellows
2255 Brentwood Rd., San Marino
- Mr. and Mrs. Merrill J. Fitzjohn
9942 E. Live Oak Ave., Temple City
- Miss Mae Franklin
9151 E. Woolley St., Temple City
- Mrs. Orrin W. Gilbert
9811 E. Broadway, Temple City
- J. F. Harvey
5922 N. Muscatel Ave., San Gabriel
- Mr. and Mrs. R. F. Hertenstein
5614 Pal Mal, Temple City
- Mrs. Aleen Hoover
4032 E. Live Oak Ave., Arcadia
- Harold P. Judy
6111 Avon Ave., San Gabriel
- Mr. and Mrs. S. H. Keller
143 N. Pine St., San Gabriel
- Mr. Fred Kracht
6289 Killdee, Long Beach 8
- Mr. and Mrs. H. W. Kridler
18007 Sierra Madre Blvd., Azusa
- I. M. Krieghbaum
650 S. Michigan Ave., Whittier
- Mr. Alfred H. Krueger
209 N. Baltimore Ave., Monterey Park
- Mr. Arthur E. Krumm
2081 Summit Ave., Altadena
- Mr. Albert Kubias
3359 Kelburn Ave., S. San Gabriel
- Mr. and Mrs. Robert M. Leeper
Box 84, Temple City
- Mr. Gordon Baker Lloyd
Box 337, San Gabriel
- Mr. G. L. Logan
5911 N. Muscatel, San Gabriel
- Mrs. Zita H. Marks
127 S. Mission Dr., San Gabriel
- Mr. and Mrs. Frank L. Maxey
9426 Emperor Ave., Temple City
- Mr. Jack McCaskill
25 S. Michillinda Ave., Pasadena 10
- Mildred W. McKeague
236 N. Daroca Dr., San Gabriel
- Don and Blanche Miller
331 W. Duarte Rd., Monrovia
- M. W. Morris
2530 Sycamore Dr., San Marino 9
- Mr. Franklin K. Murray
1945 Endicutt Rd., San Marino 9
- Mr. and Mrs. Guy A. Nicolls
117 Segovia Ave., San Gabriel
- Mr. Richard Noble
7640 S. Danby Ave., Whittier
- Joseph and Julius Nuccio
3555 Chaney Trail, Altadena
- Harry S. Putman
2964 Eucalyptus Ave., Long Beach
- Mr. and Mrs. Frank L. Ramsey
2025 S. 4th St., Alhambra
- Mr. Clarence D. Rose
6025 N. Muscatel Ave., San Gabriel
- Mrs. June Manson Schroth
432 N. Alabama St., San Gabriel
- Mr. and Mrs. Byron Short
5731 N. Muscatel Ave., San Gabriel
- Mr. and Mrs. L. W. Strohmyer
8755 E. Hermosa Dr., San Gabriel
- Mr. and Mrs. T. L. Torgerson
447 N. Hidalgo Ave., Alhambra
- Mr. and Mrs. Vincent Vernaci
5838 S. Gloden West Ave., Temple City
- Ailce M. Wood
432 N. Alabama St., San Gabriel

California Redwood Plant Tub

There is more fun in gardening—better results, too, when you can control the soil, shade and water conditions. Doubling in duty and decoration.

Octagonal tubs from 12 to 24 inches—Square tubs from 8 to 18 inches. Designed and made especially for camellias and azaleas.

For Sale at your Neighborhood Nursery

PATIO WOOD PRODUCTS

835 Commercial Street

San Gabriel, California

AZALEAS CAMELLIAS **CYMBIDIUMS GARDENIAS**

PEAT MOSS — FERTILIZERS

Camellia and Azalea Lists Upon Request

MARSHALL'S CAMELLIA NURSERY

6747 NORTH ROSEMEAD BOULEVARD

At the sign of the Red Camellia
AT. 6-0452.

½ block south of Duarte Rd.
San Gabriel, Calif.

WHICH WILL YOU CHOOSE?

Any one of the fine Camellias mentioned below will be sent to you as your reward for obtaining only . . .

5 New Members to the S. C. C. S.

Bryan Wright, Mrs. Clark, Elizabeth Le Bey, Crusader, St. Andre, Carolyn Tuttle, Dr. Tinsley, Nina Avery, Thomas D. Pitts, Dr. H. G. Mealing, Spring Sonnet, Betty Sheffield, Jessie Katz, Zachary Taylor, Drama Girl.

Harvey Short Seedlings—Frosty Morn; Pink Clouds; Sunset Glory; Spring Triumph

WHICH WILL YOU CHOOSE?

Send your subscriptions for 5 new members to

Secretary S. C. C. S.

40 N. SAN RAFAEL

PASADENA, CALIF.

**Southern California
Camellia Society, Inc.
40 N. San Rafael Ave.
Pasadena 2, California**

**Forwarding and Return
Postage Guaranteed**